

CatapultCase.LP v1.0

INSTRUCTIONS

(IN DEVELOPMENT)

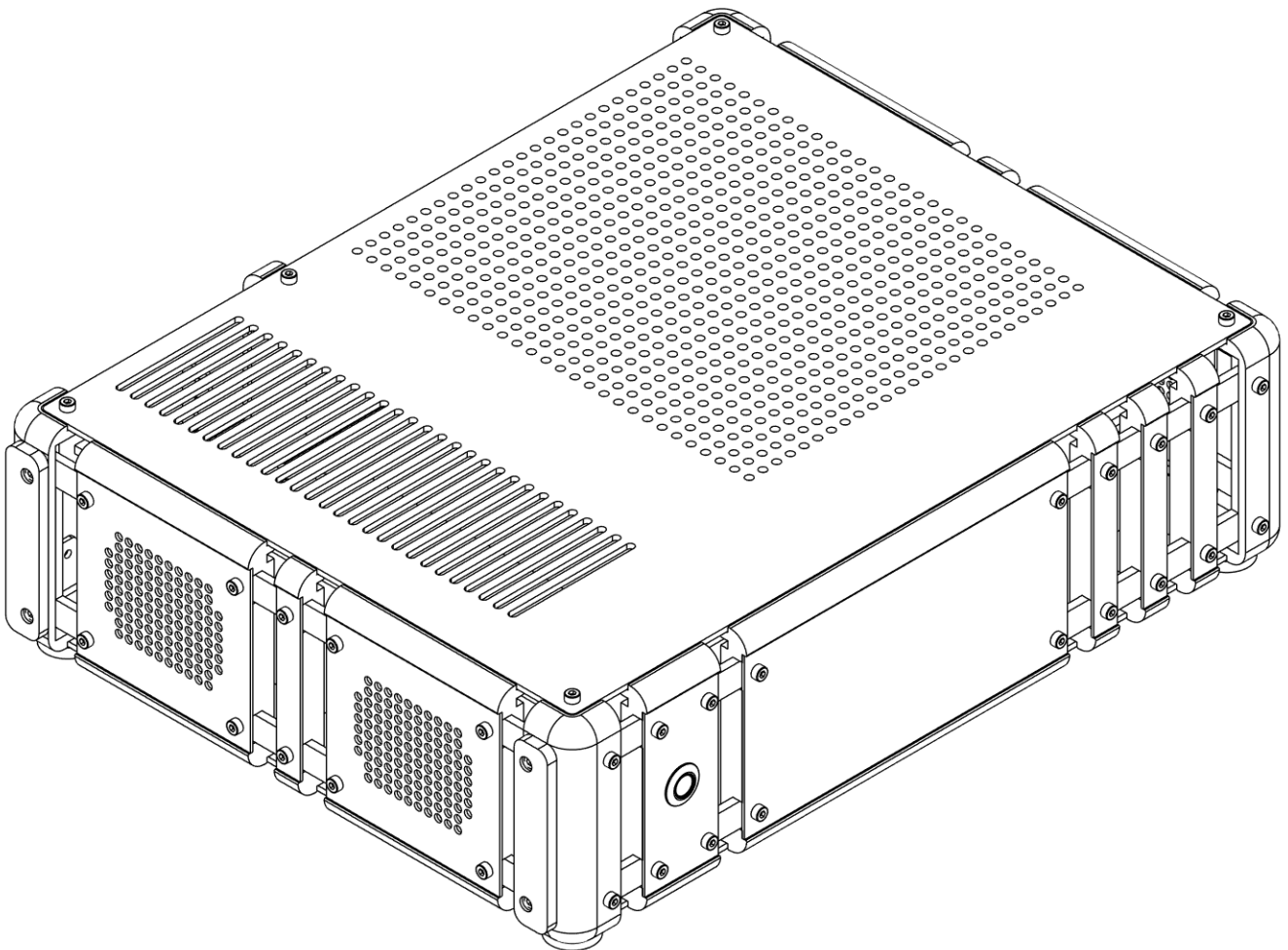


Table of Contents

Parts	4
Motherboard Tray	4
1x METAL_LP_Motherboard_Tray	4
1x Plastic_LP_2mm_Motherboard_Tray.....	4
1x Plastic_LP_5mm_Motherboard_Tray.....	4
Struts	5
2x METAL_Strut_220mm	5
1x METAL_Strut_283mm	5
2x Plastic_Strut_220mm	5
1x Plastic_Strut_283mm	5
Combo Mounts for HDPLEX PSU and GPU Riser	6
4x Combo Mount for HDPLEX PSU and GPU Riser	6
4x Plastic_1.5mm_Combio_Mount (2.8mm holes for passthrough M2.5mm)	6
4x Plastic_3mm_Combio_Mount (2.8mm holes for passthrough M2.5mm)	6
Plastic Corners	7
4x Plastic_Corner	7
4x Plastic_Corner_Supported_45	7
Plastic Feet.....	8
5x Foot_Horizontal.....	8
2x Foot_Vertical.....	8
Back Plate	9
1x METAL_LP_Back_Plate.....	9
1x Plastic_LP_Back_Plate.....	9
Segment Back Bracer	9
1x Plastic_LP_Segment_Back_Bracer	9
Top Plate.....	10
1x METAL_LP_Top_Plate	10
1x Plastic_LP_Top_Plate	10
Bottom Plate.....	11
1x METAL_LP_Bottom_Plate	11
1x Plastic_LP_Bottom_Plate	11
Metal and 3D Printed Parts example	12
3D Printed Parts example	13
Assembly Instructions	14

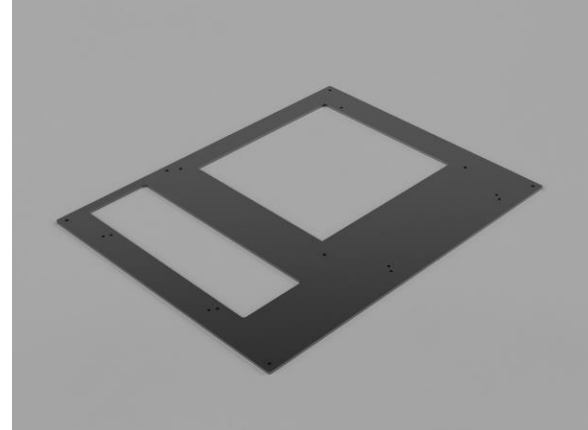
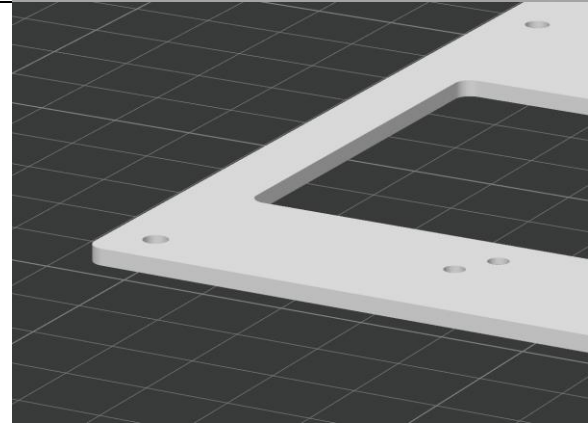
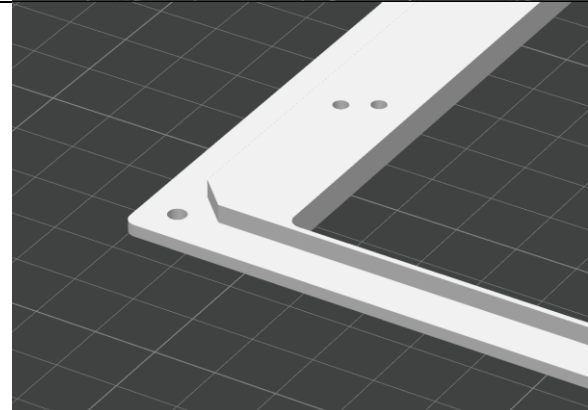
Attach internal components to motherboard tray.	14
2x Combo Mounts for HDPLEX PSU	14
2x Combo Mounts for GPU Riser	15
Completed view	16
Attach M3 motherboard standoffs (max length of screw should not exceed 4mm).....	17
Prepare Front and Side panels	18
Attach HDPLEX PSU to the front Combo Mounts	27
Attach PCI Riser to Rear Combo Mounts	30
Flip case onto front face, using the weight of the PSU for support	34
Install the Rear Corners and Feet (If using horizontal orientation)	35
Install the Back Plate and attach the PSU power connector	38
Attach the Side Panels to the rear Corners	40
Attach the Front Plate , Corners and Feet to the Side Panels installed previously.....	43
Attach the final foot (if using horizontal orientation) with the Segment Back Bracer to the Back Plate	45
Install Motherboard.....	47
Install GPU	48
Install Top Plate.....	49
Build Complete.....	50

Parts

CatapultCases can be assembled with either entirely 3D Printed parts, or with optional metal components.

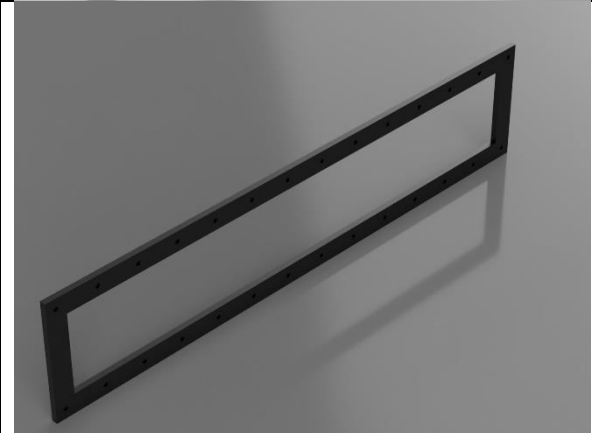
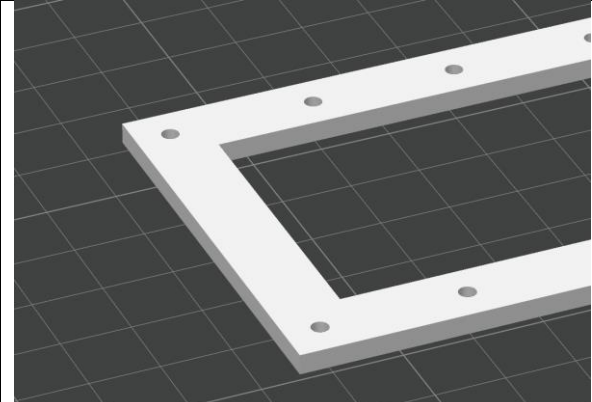
Motherboard Tray

Select 1 of the following options for your motherboard tray:

	<p>1x METAL_LP_Motherboard_Tray</p> <p>The premium choice for stability and heat resistance. Available from the CatapultCase store:</p> <p>https://store.catapultcase.com/products/catapult-lp-motherboard-tray</p>
	<p>1x Plastic_LP_2mm_Motherboard_Tray</p> <p>3D Printed, 2mm thick with hole sizing for either self-tapping with M2.5 and M3 screws, or for threaded heat-inserts.</p>
	<p>1x Plastic_LP_5mm_Motherboard_Tray</p> <p>3D Printed, up to 5mm thick with hole sizing for either self-tapping with M2.5 and M3 screws, or for threaded heat-inserts.</p>


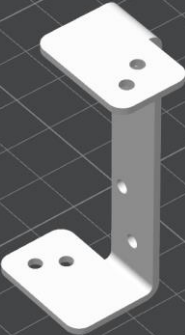
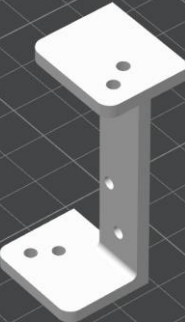
Struts

You will need 1 front and 2 side struts from the following options:

	<p>2x METAL_Strut_220mm</p> <p>The premium choice for stability and heat resistance. Available from the CatapultCase store:</p> <p>https://store.catapultcase.com/products/220mm-strut</p>
	<p>1x METAL_Strut_283mm</p> <p>The premium choice for stability and heat resistance. Available from the CatapultCase store:</p> <p>https://store.catapultcase.com/products/283mm-strut</p>
	<p>2x Plastic_Strut_220mm</p> <p>3D Printed, 3mm thick with hole sizing for self-tapping with M2.5 screws.</p>
	<p>1x Plastic_Strut_283mm</p> <p>3D Printed, 3mm thick with hole sizing for self-tapping with M2.5 screws.</p>

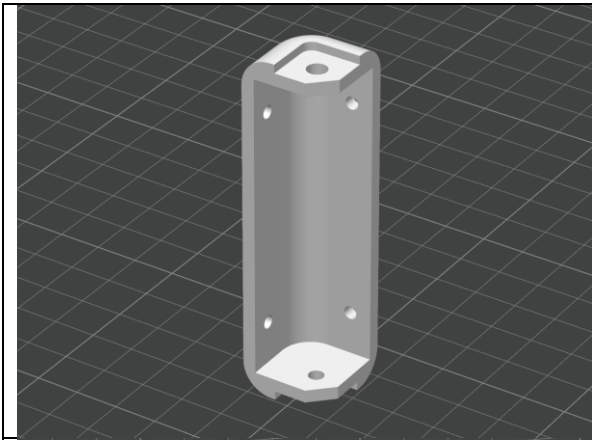
Combo Mounts for HDPLEX PSU and GPU Riser

You will need 4 Combo Mounts for the completed design:

	<p>4x Combo Mount for HDPLEX PSU and GPU Riser</p> <p>The premium choice for stability and heat resistance. Available from the CatapultCase store:</p> <p>https://store.catapultcase.com/products/4-pack-combo-mount-for-hdplex-psu-and-gpu-riser</p>
	<p>4x Plastic_1.5mm_Combo_Mount (2.8mm holes for passthrough M2.5mm)</p> <p>A replication of the metal version above – be sure to use a strong, heat-resistant filament such as ASA or ABS.</p>
	<p>4x Plastic_3mm_Combo_Mount (2.8mm holes for passthrough M2.5mm)</p> <p>A thicker replication of the metal version above – be sure to use a strong, heat-resistant filament such as ASA or ABS. Note that due to the thickness, internal tolerances are slightly reduced when these are used, but will not be a problem when using default Catapult components.</p>

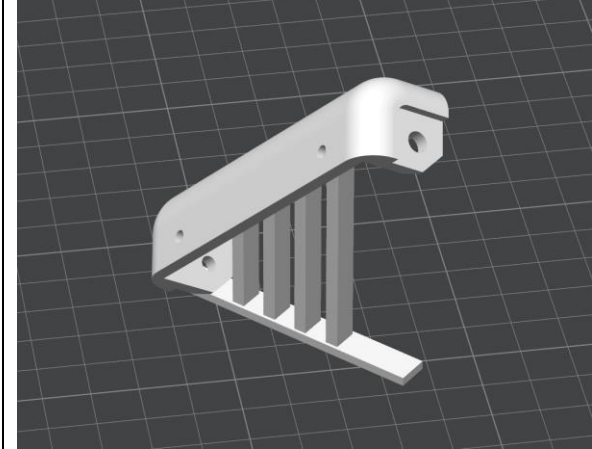
Plastic Corners

You will need 4 Corners for the completed design:



4x Plastic_Corner

Print in a strong, heat-resistant filament such as PETG, ASA or ABS.

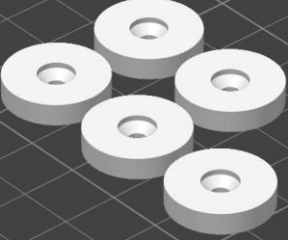
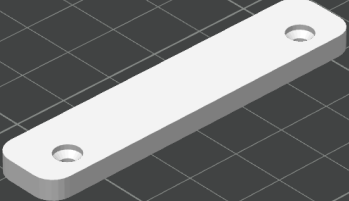


4x Plastic_Corner_Supported_45

Pre-supported model at a 45 degree angle for optimized strength and post-processing. Print in a strong, heat-resistant filament such as PETG, ASA or ABS.

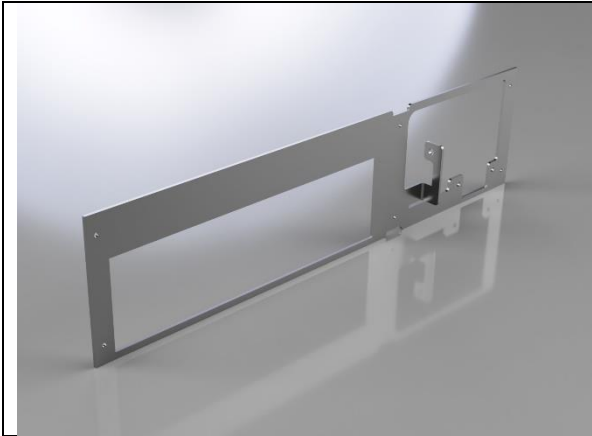
Plastic Feet

You will need 5 feet for horizontal placement, or 2 for vertical:

	<p>5x Foot_Horizontal</p> <p>Print in a strong, heat-resistant filament such as PETG, ASA or ABS.</p>
	<p>2x Foot_Vertical</p> <p>Print in a strong, heat-resistant filament such as PETG, ASA or ABS.</p>

Back Plate

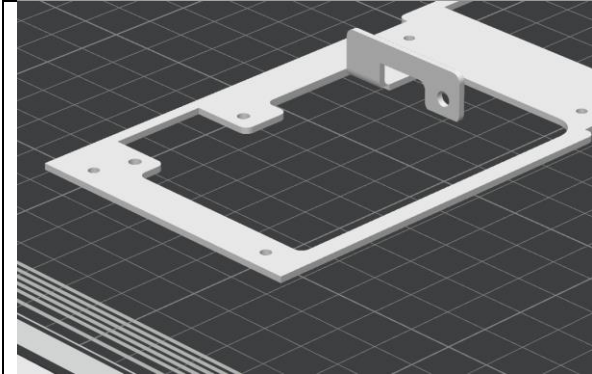
Select 1 of the following options for your Back Plate:



1x METAL_LP_Back_Plate

The premium choice for stability and heat resistance. Available from the CatapultCase store:

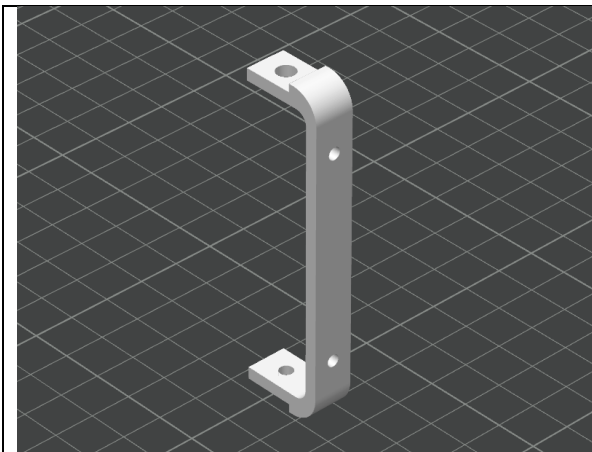
<https://store.catapultcase.com/products/catapult-lp-back-plate>



1x Plastic_LP_Back_Plate

Print in a strong, heat-resistant filament such as PETG, ASA or ABS. Has 2.5mm holes for self-tapping with M2.5 screws.

Segment Back Bracer

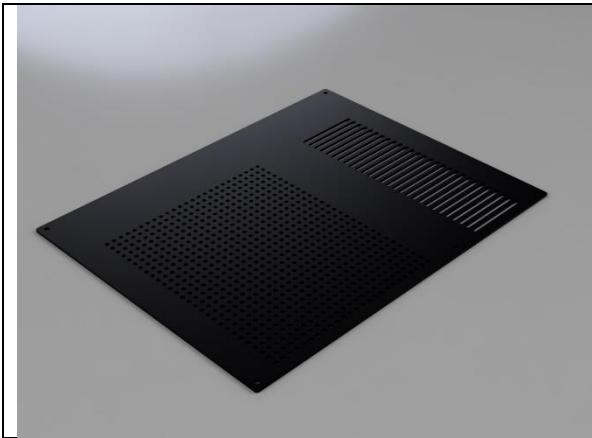


1x Plastic_LP_Segment_Back_Bracer

Print in a strong, heat-resistant filament such as PETG, ASA or ABS. Has a 4.6mm hole at 1 end for a M3 threaded heat-insert to be installed.

Top Plate

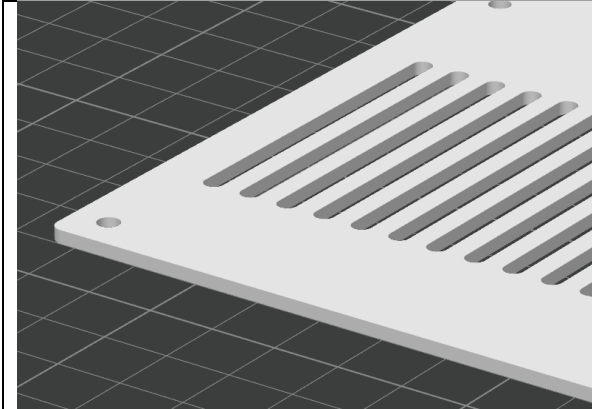
Select 1 of the following options for your Bottom Plate:



1x METAL_LP_Top_Plate

The premium choice for stability and heat resistance. Available from the CatapultCase store:

<https://store.catapultcase.com/products/catapult-lp-top-plate>

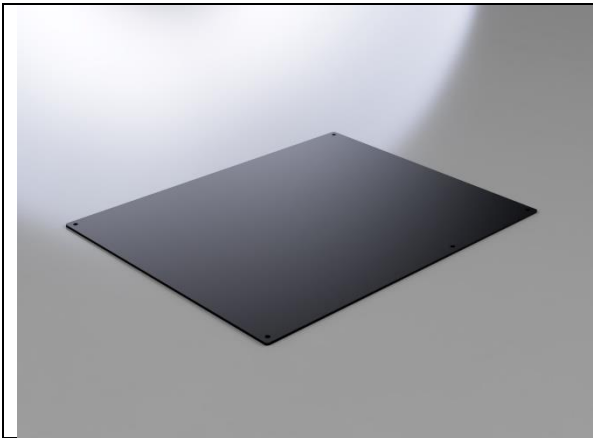


1x Plastic_LP_Top_Plate

Print in a strong, heat-resistant filament such as PETG, ASA or ABS.

Bottom Plate

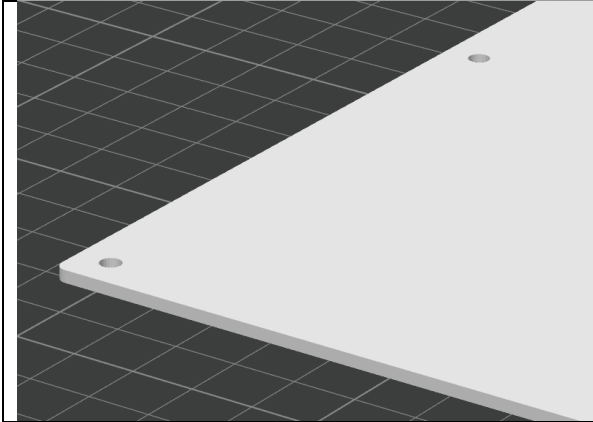
Select 1 of the following options for your Bottom Plate:



1x METAL_LP_Bottom_Plate

The premium choice for stability and heat resistance. Available from the CatapultCase store:

<https://store.catapultcase.com/products/catapult-lp-bottom-plate>



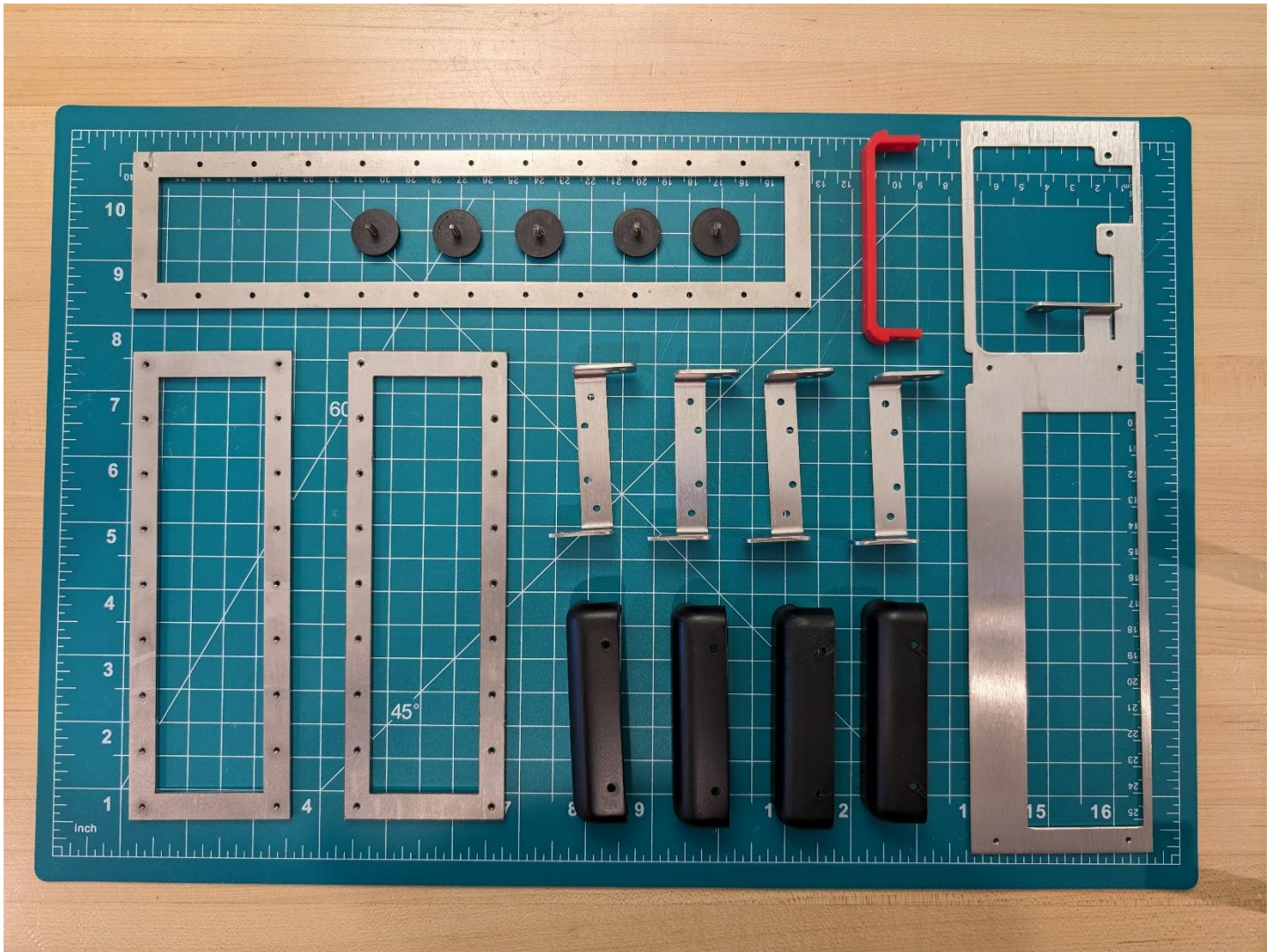
1x Plastic_LP_Bottom_Plate

Print in a strong, heat-resistant filament such as PETG, ASA or ABS.

Metal and 3D Printed Parts example

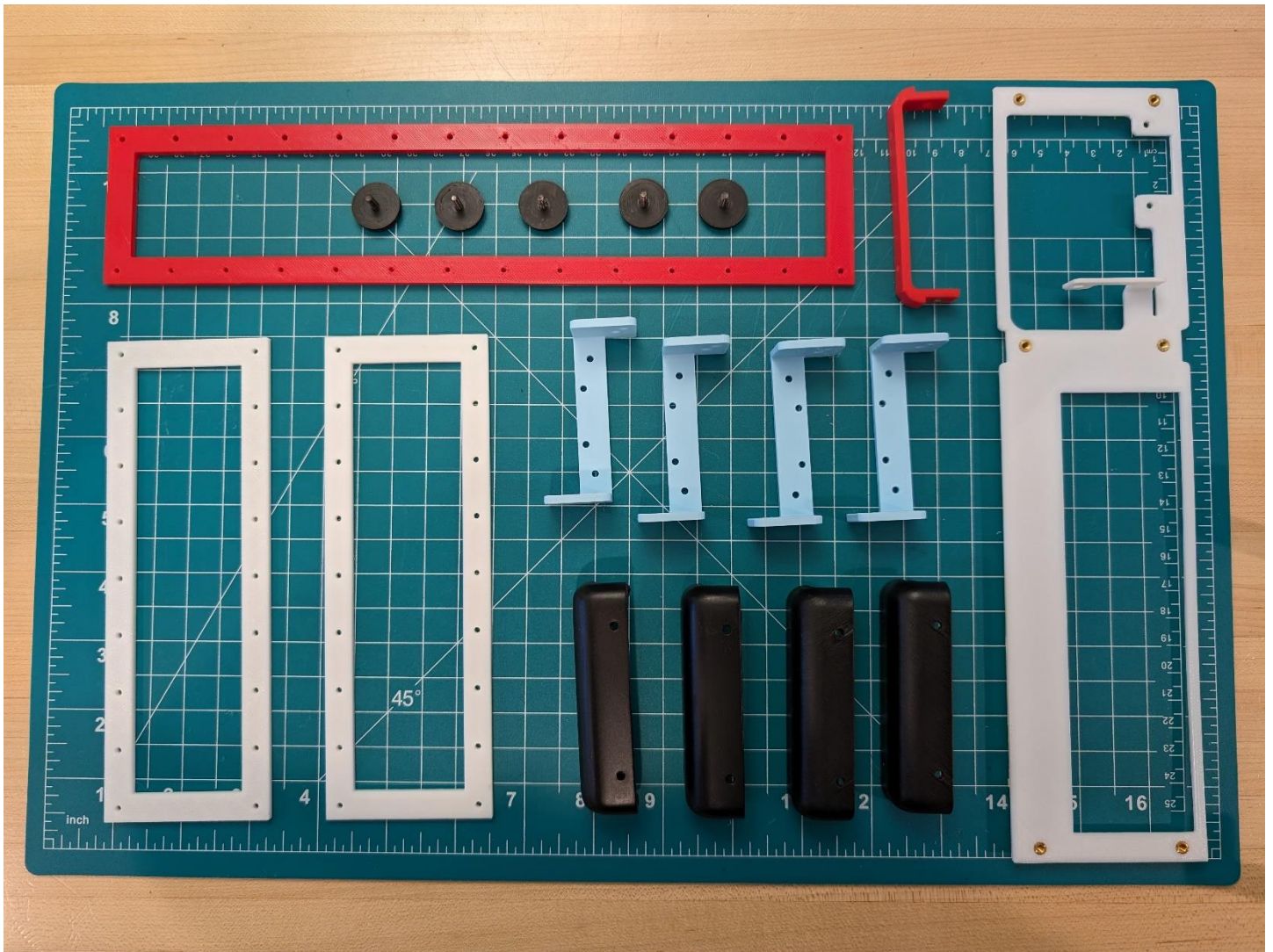
The premium choice for stability and heat resistance is to use metal components for the following parts:

- 1x 283mm Front Strut
- 2x 220mm Side Strut
- 4x Combo Mounts for HDPLEX PSUs and GPU Riser
- 1x LP Back Plate
- 1x LP Motherboard Tray
- 1x LP Top Plate
- 1x LP Bottom Plate



3D Printed Parts example

CatapultCase.LP can be entirely 3D printed, however you must select appropriate filament for the expected stresses & temperatures of a PC case. We recommend using ASA/ABS or PETG with at least a 45% Gyroid infill.

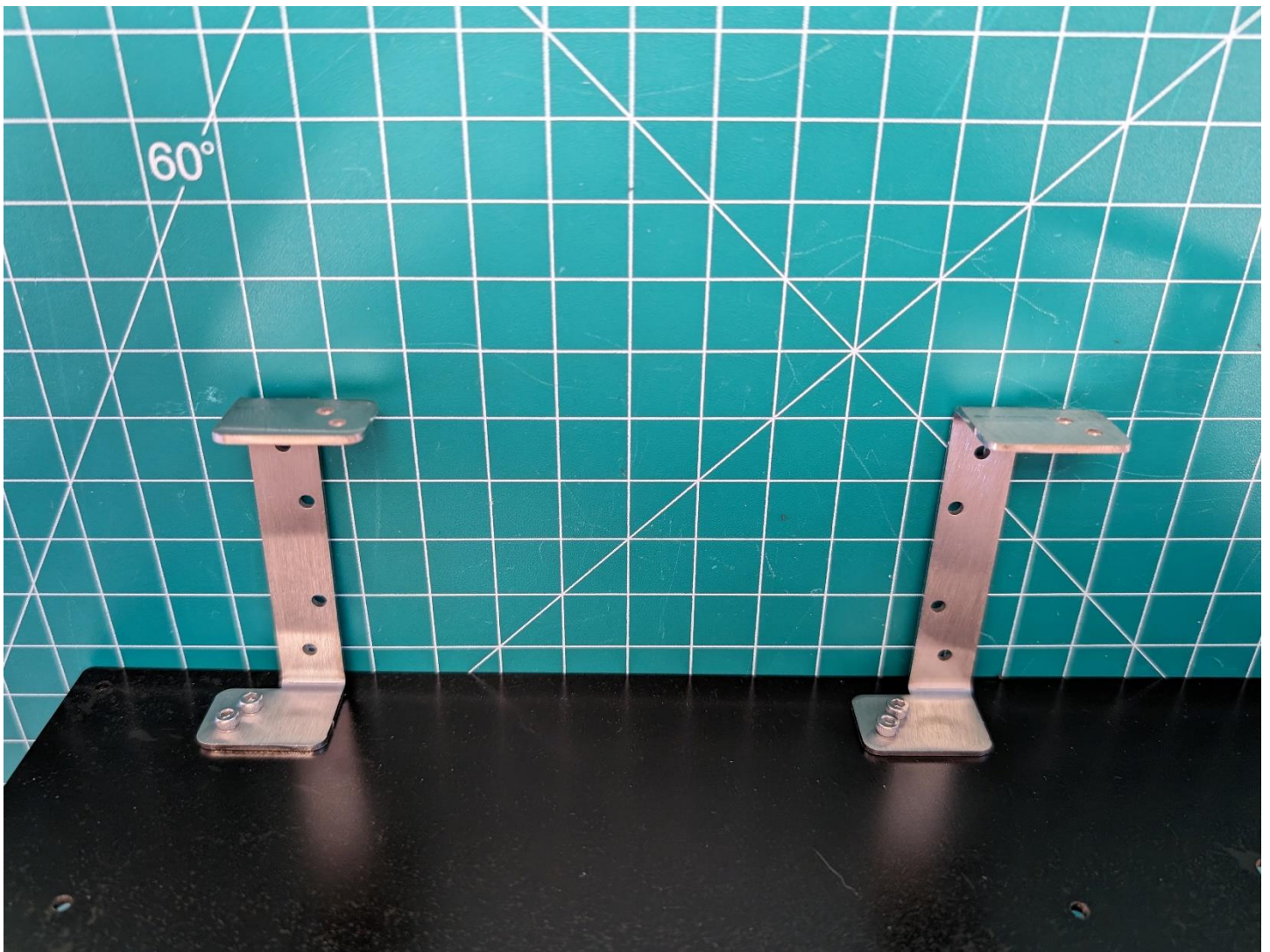


Assembly Instructions

Attach internal components to motherboard tray.

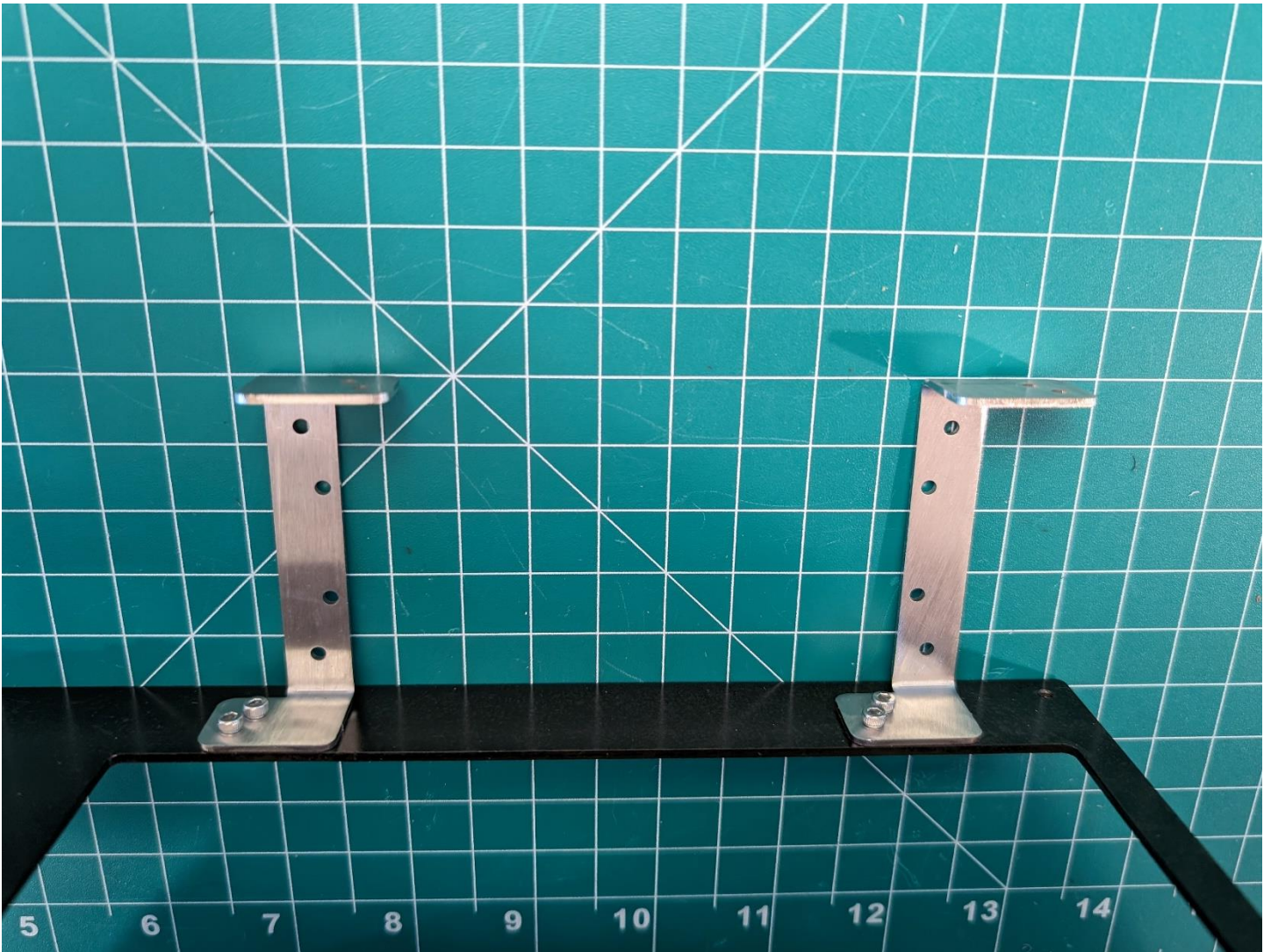
2x Combo Mounts for HDPLEX PSU

Attach 2x Combo Mounts to the motherboard tray using M2.5 screws – suggested length 6mm. Note the orientation of the tabs, however, it does not matter if the internal holes face left or right for the HSPLEX PSU mounting process.

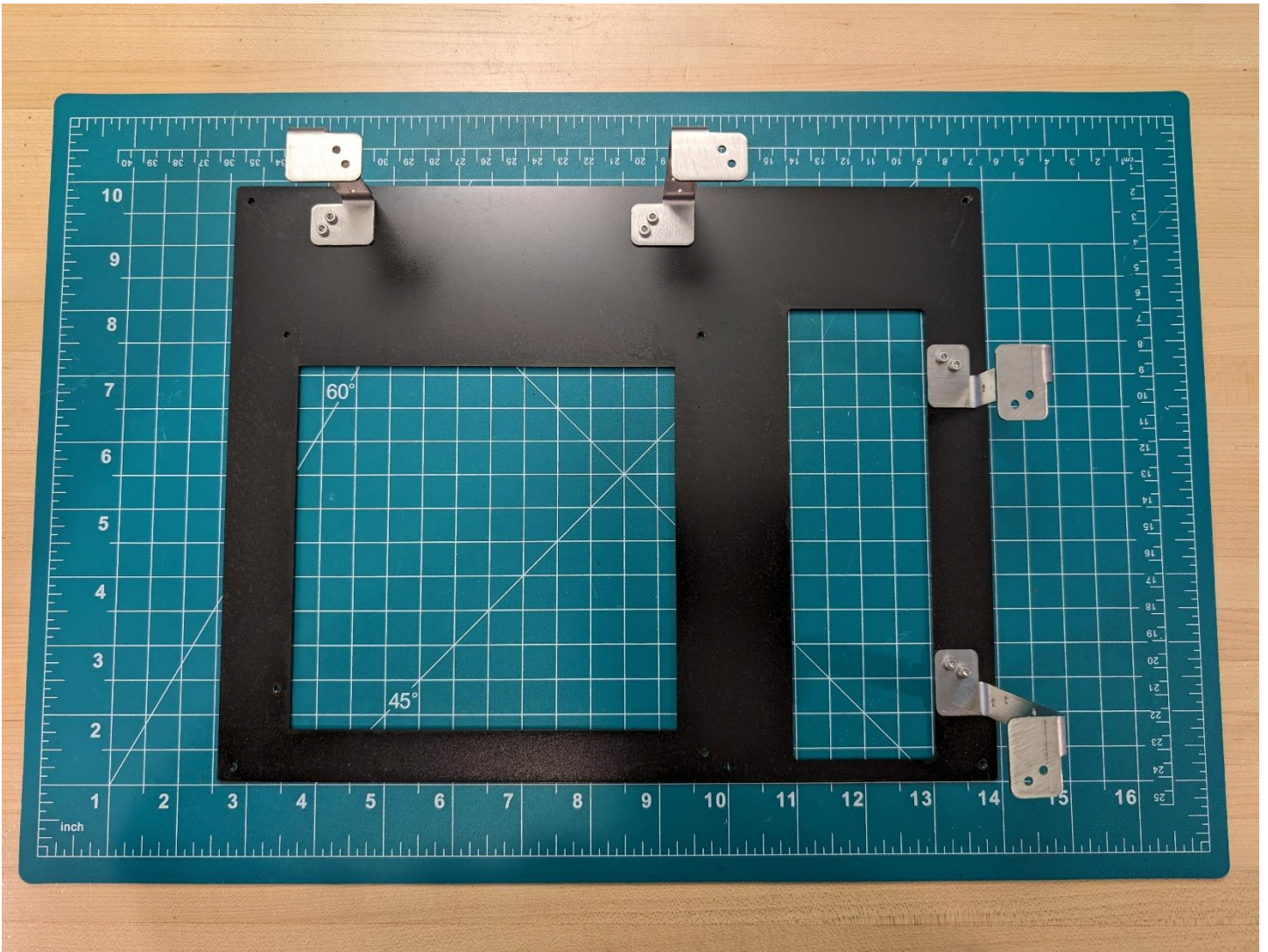


2x Combo Mounts for GPU Riser

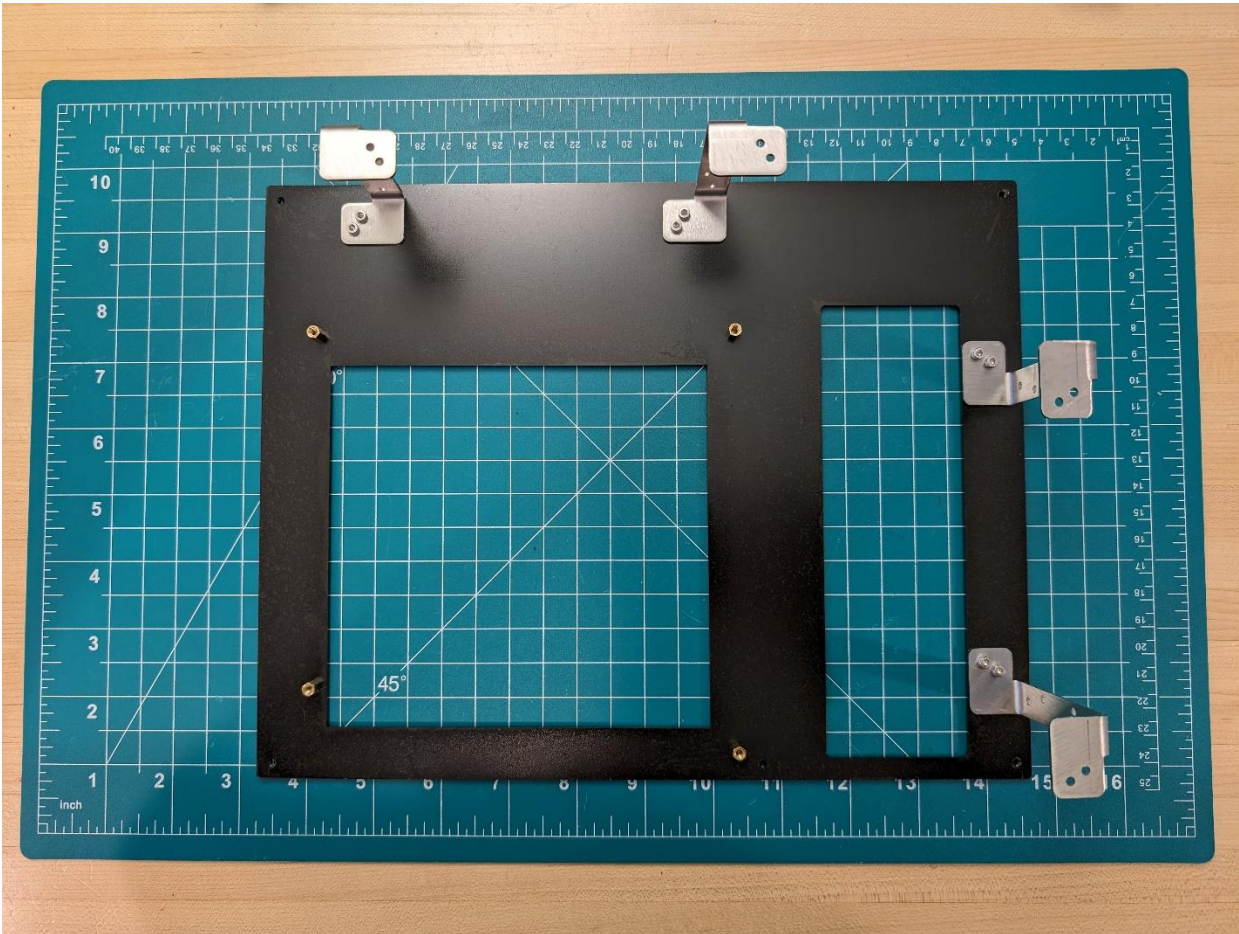
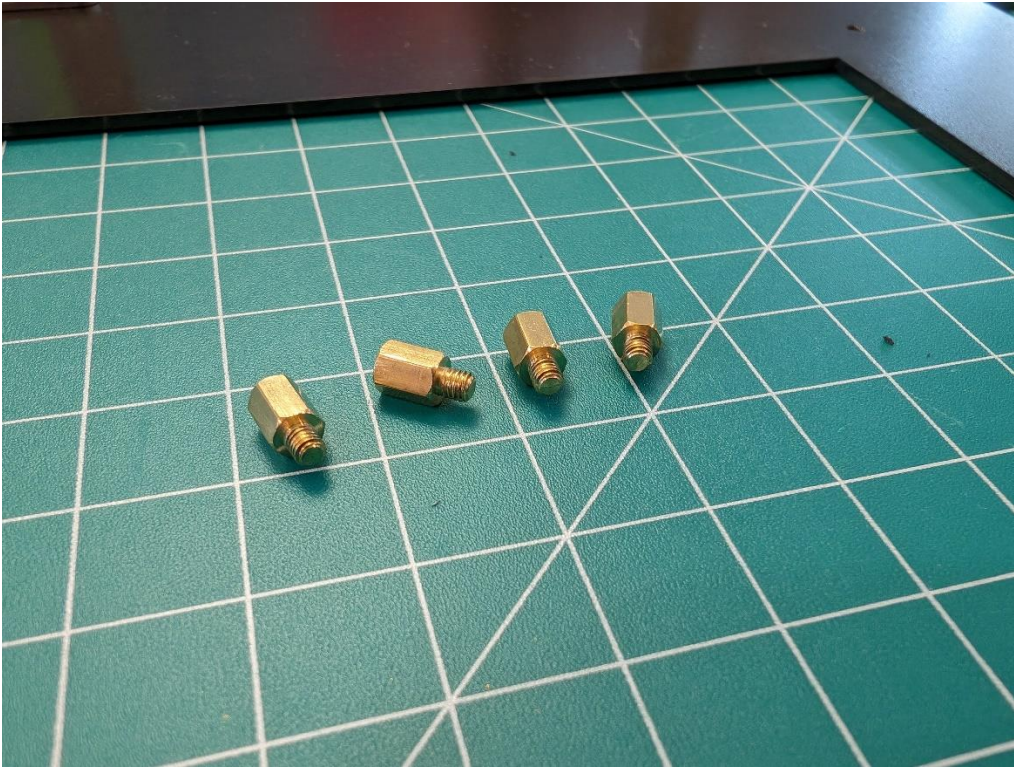
Attach 2x Combo Mounts to the motherboard tray using M2.5 screws – suggested length 6mm. Note the orientation of the tabs and ensure that the internal holes are facing **inside** towards each other as shown.



Completed view

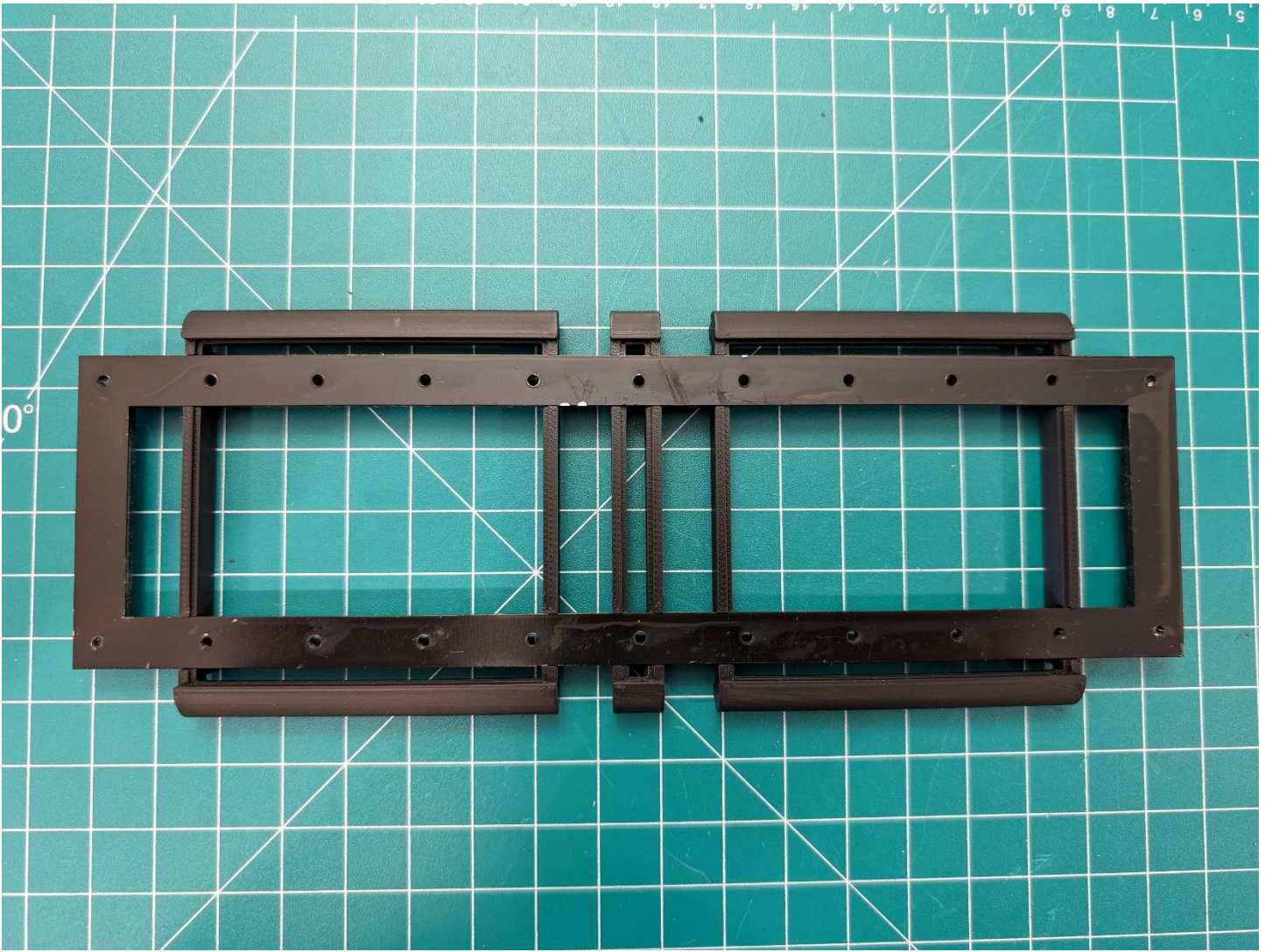


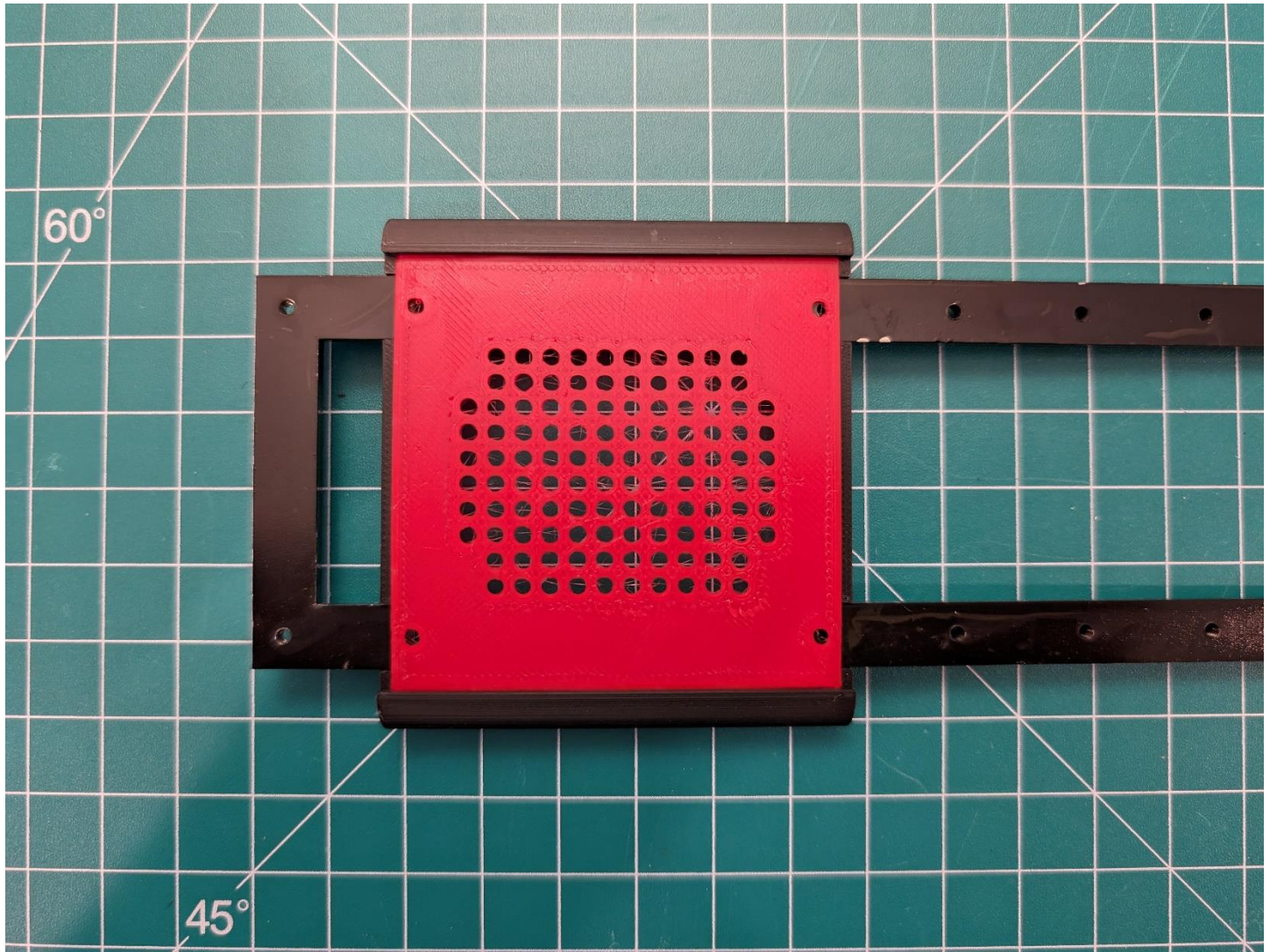
Attach M3 motherboard standoffs (max length of screw should not exceed 4mm)

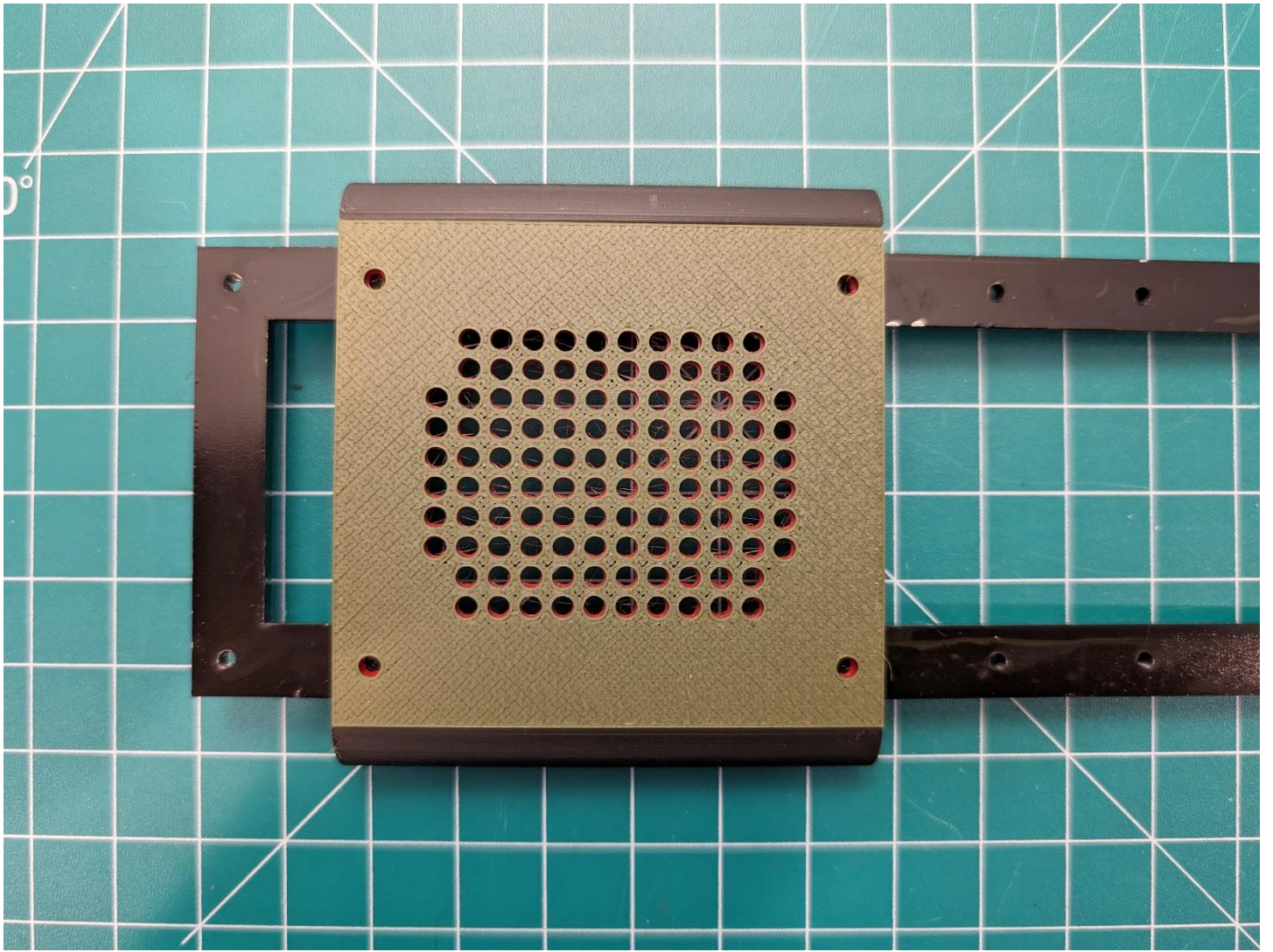


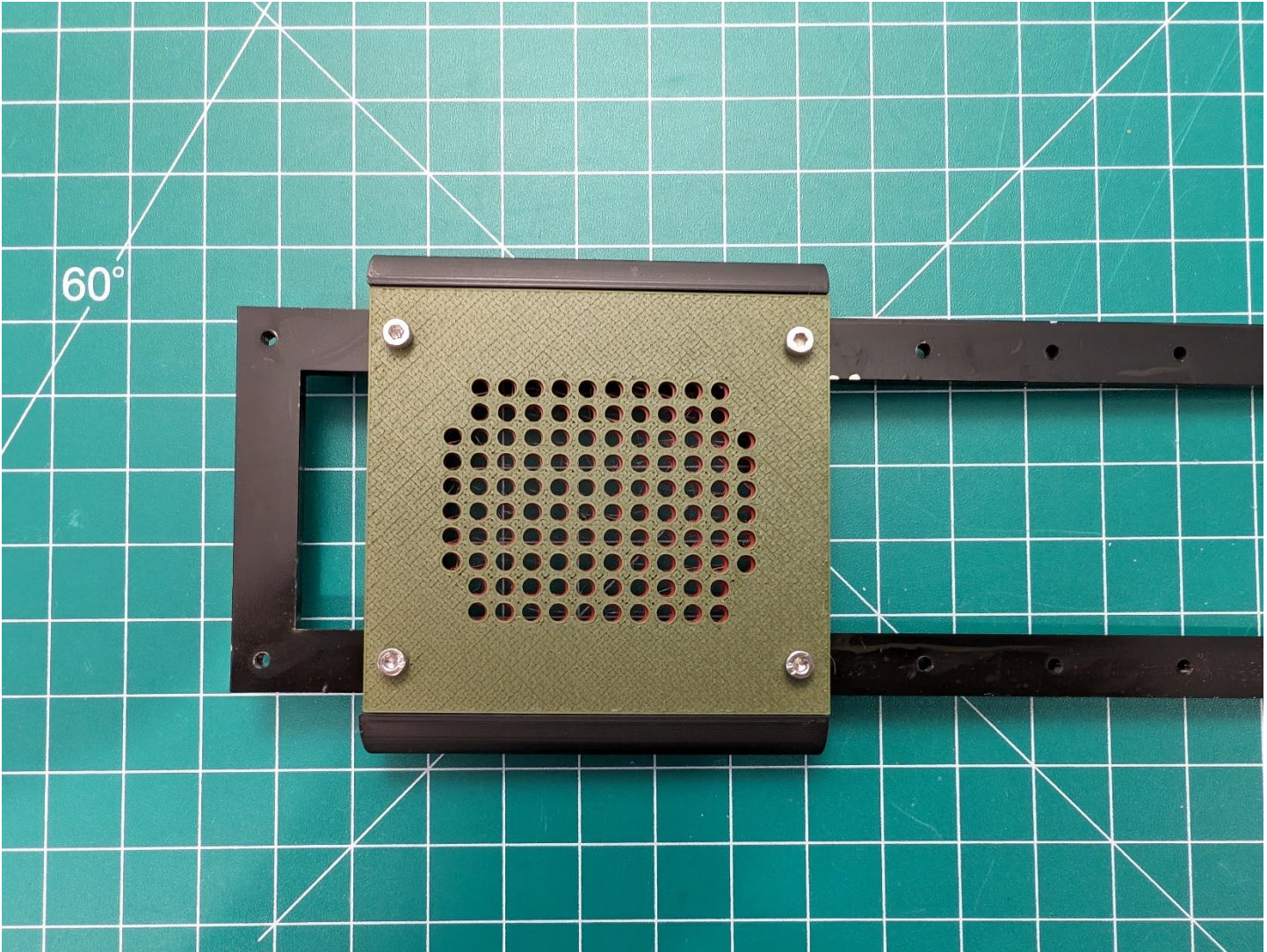
Prepare Front and Side panels

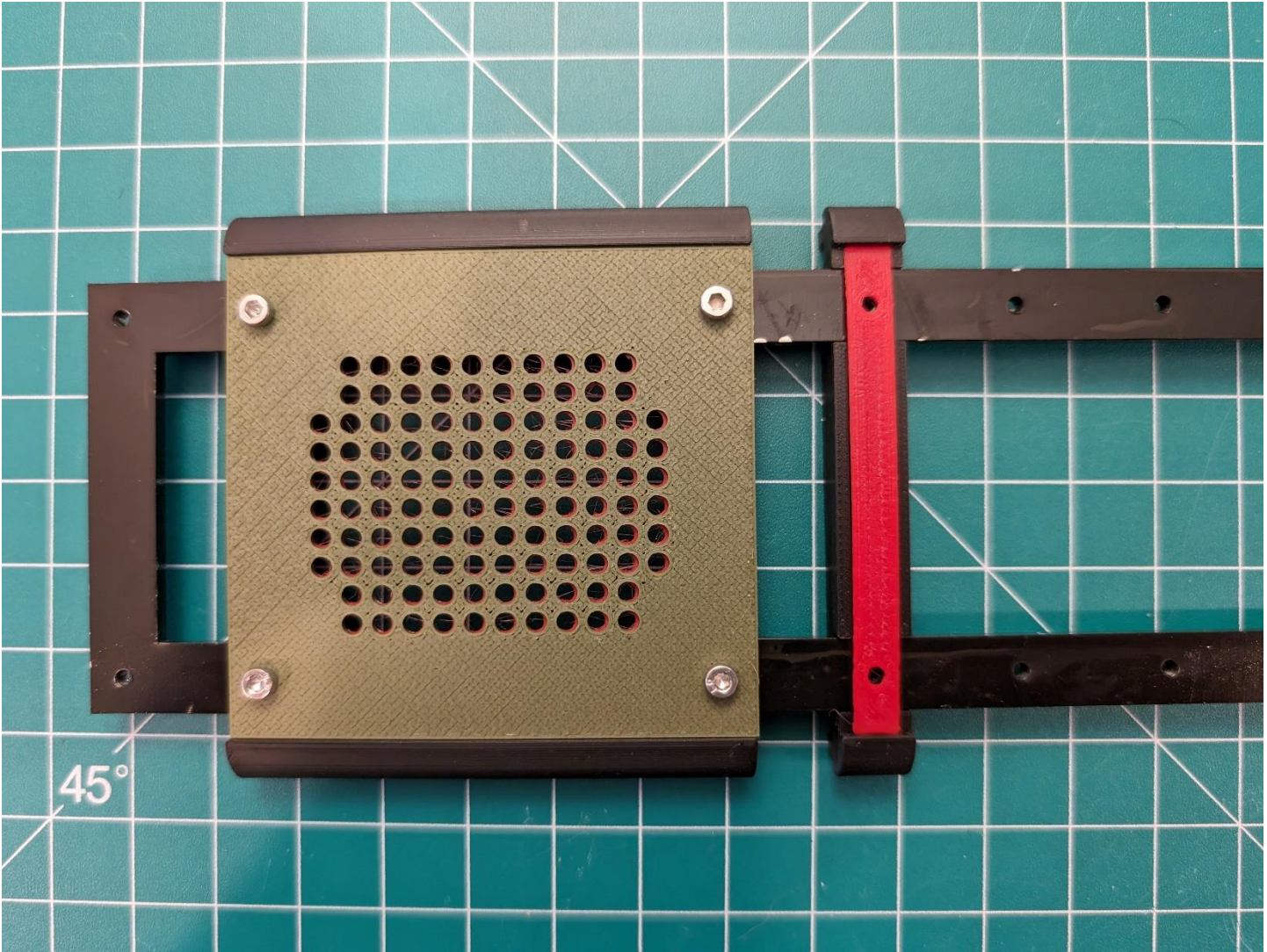


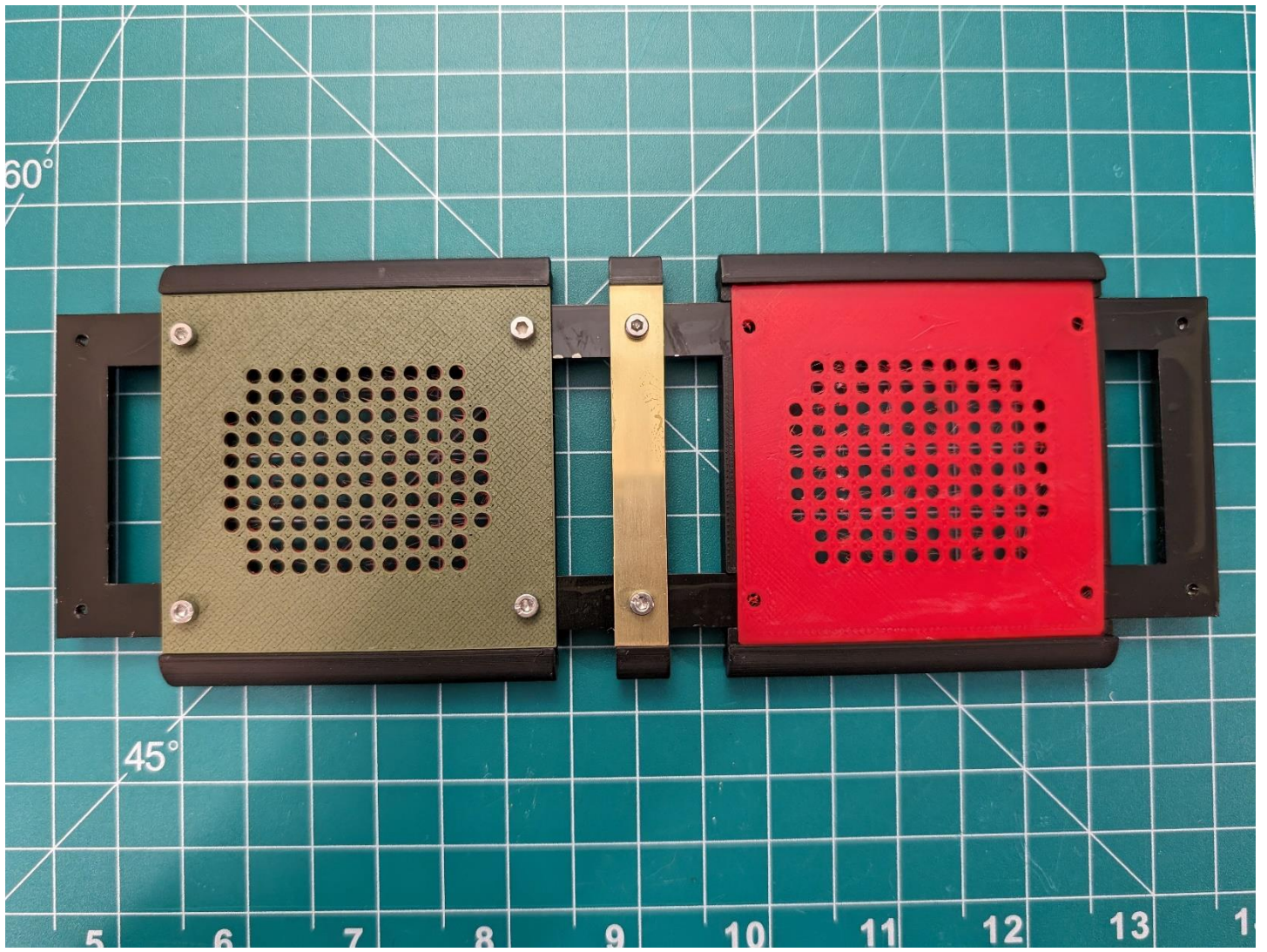


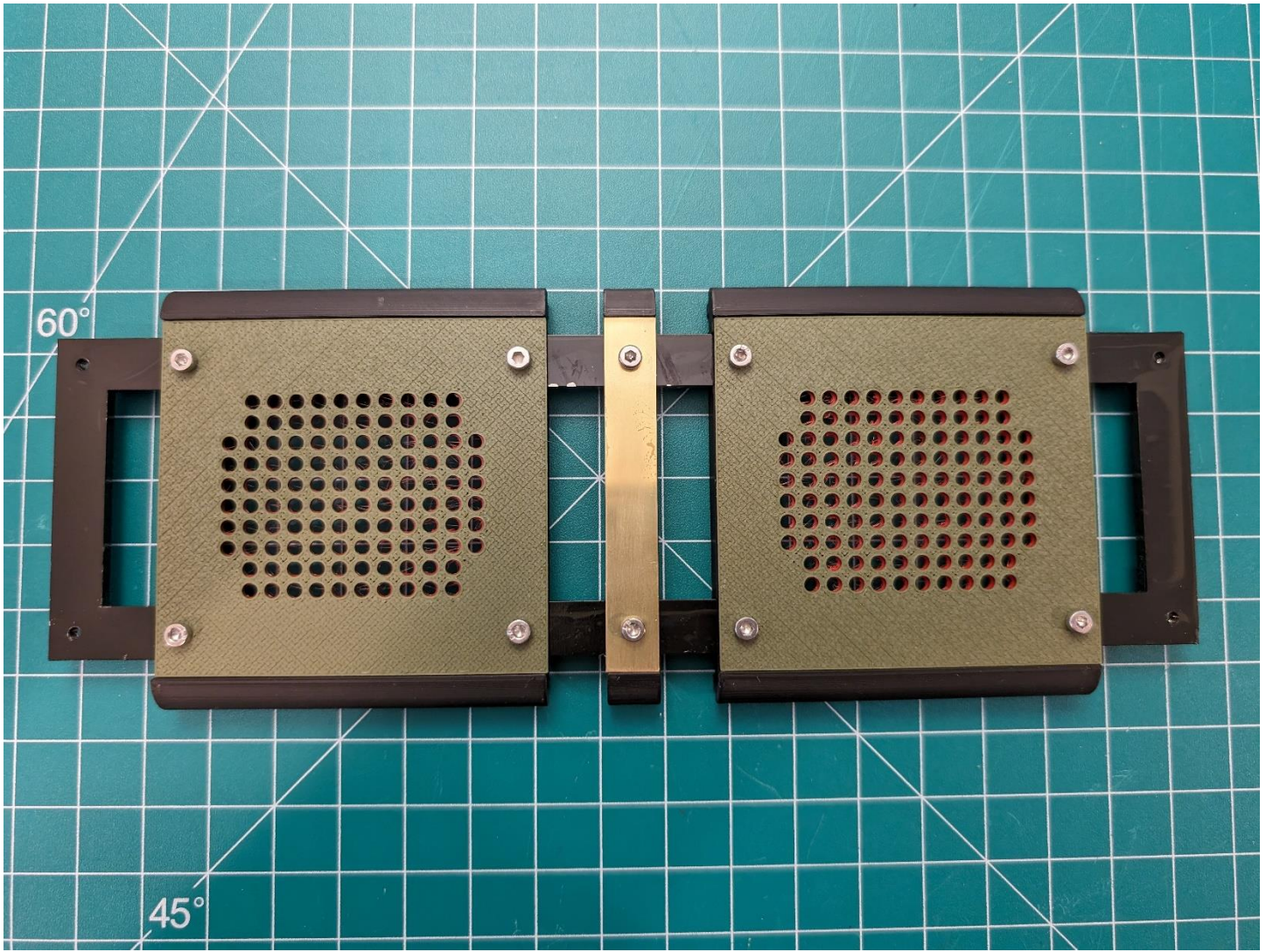


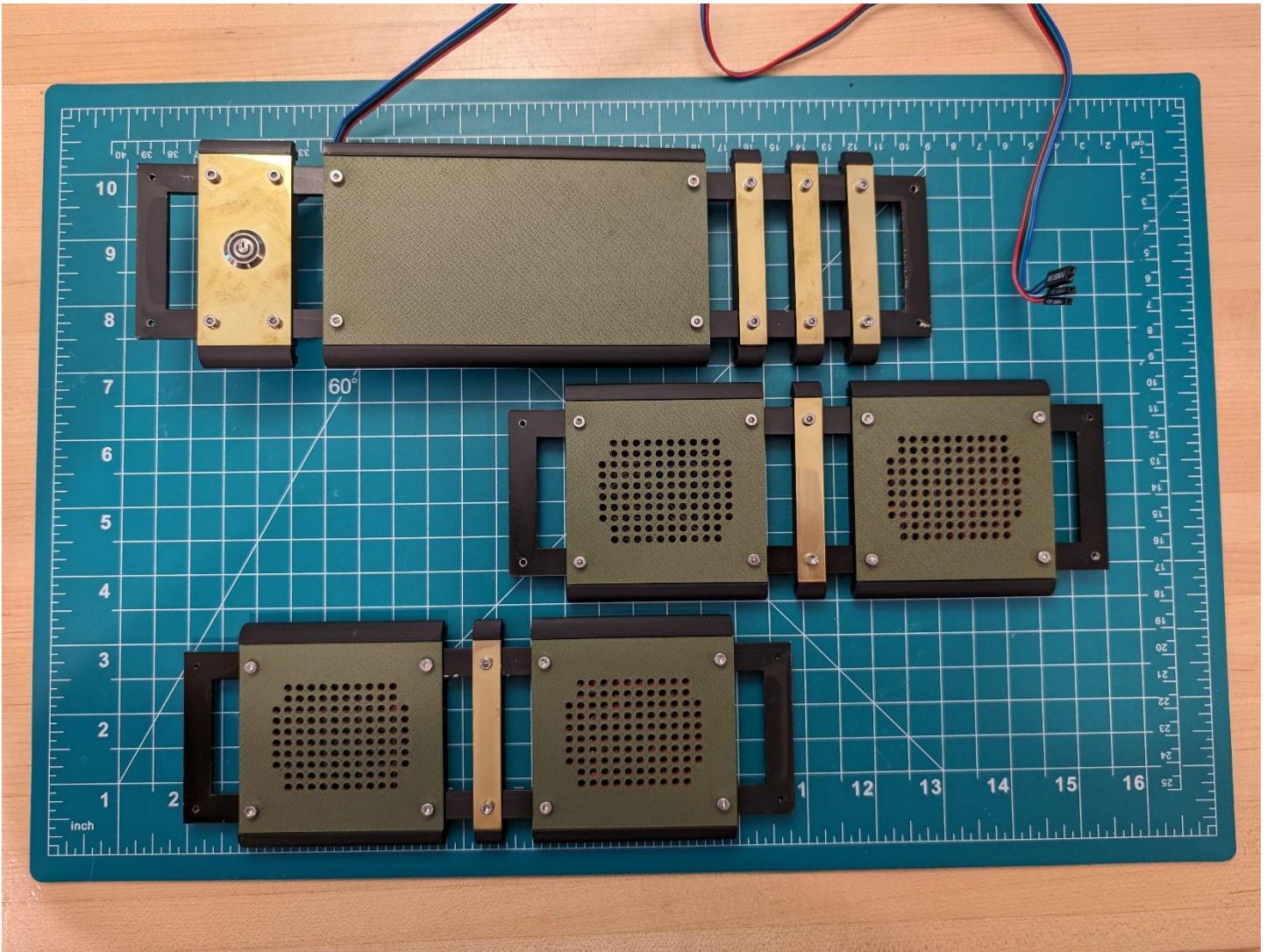






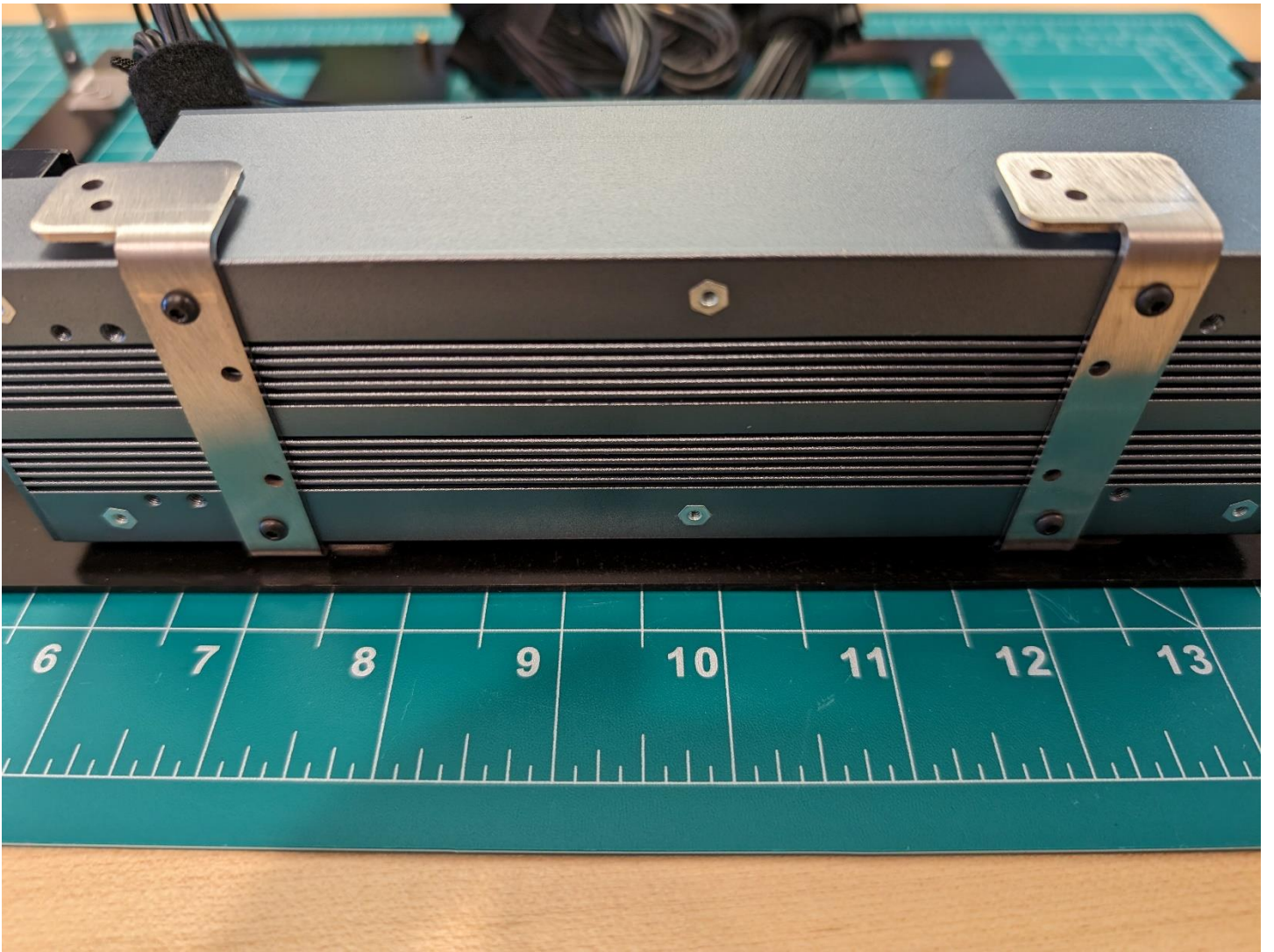


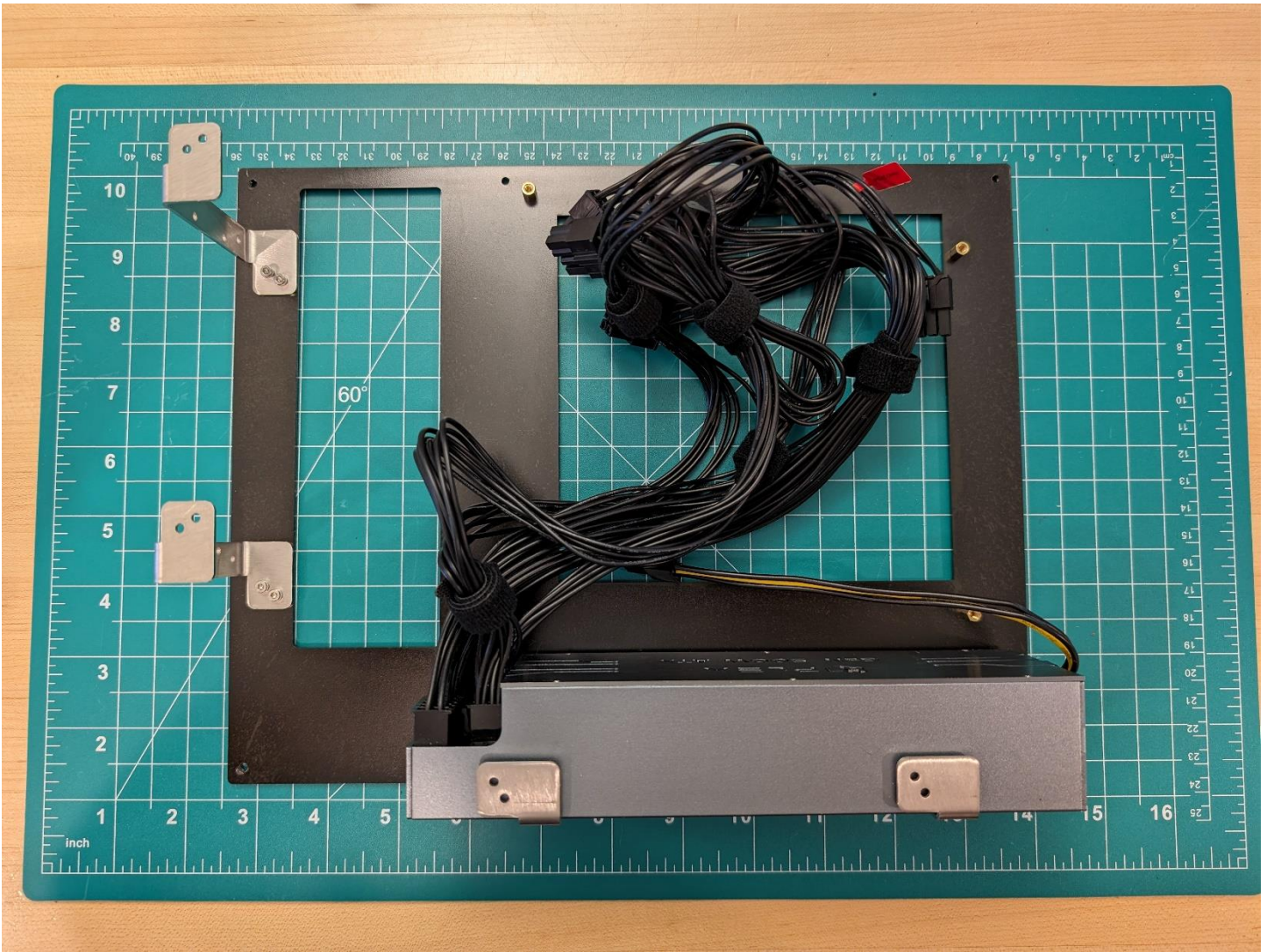




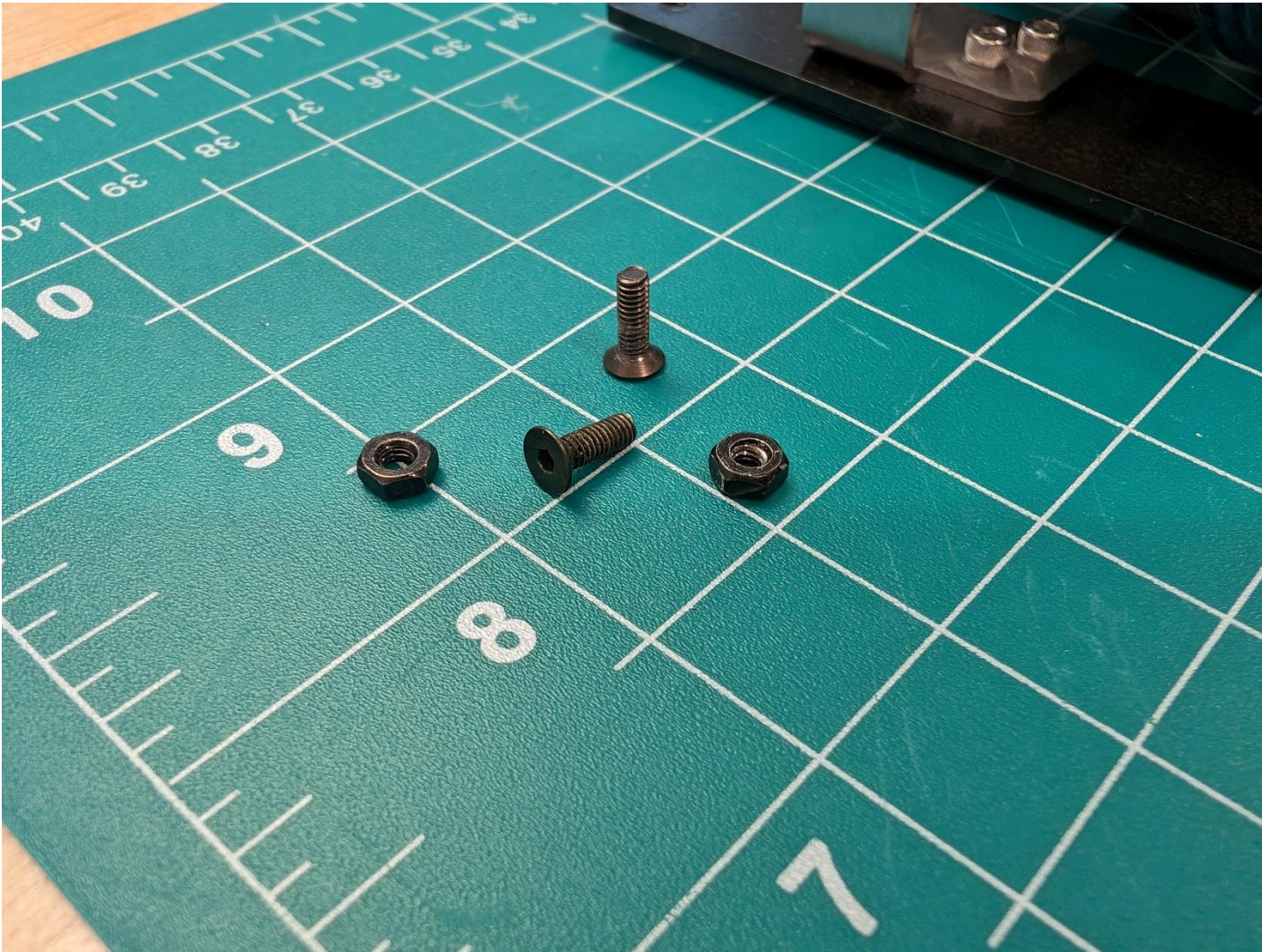
Attach HDPLEX PSU to the front Combo Mounts

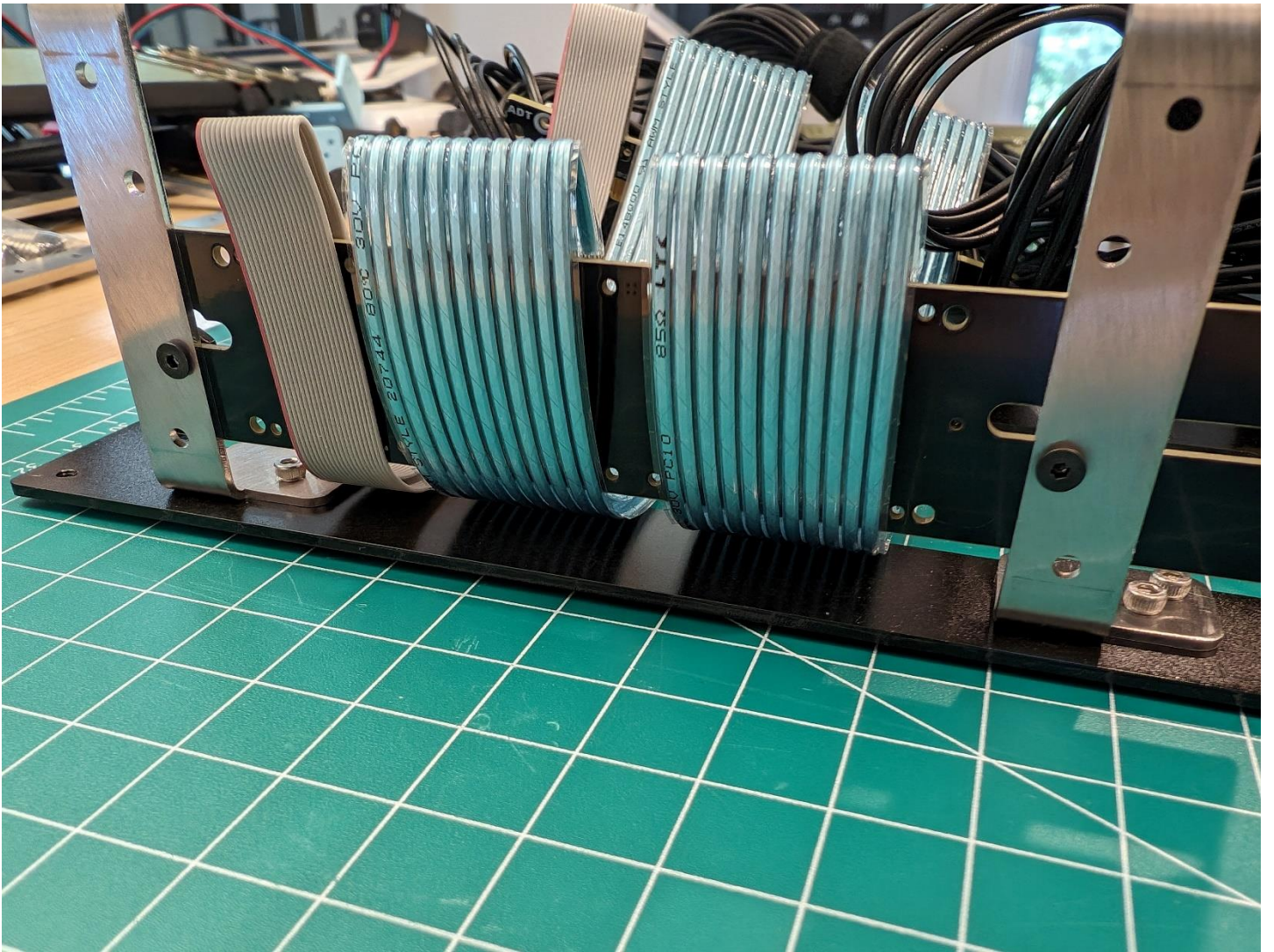


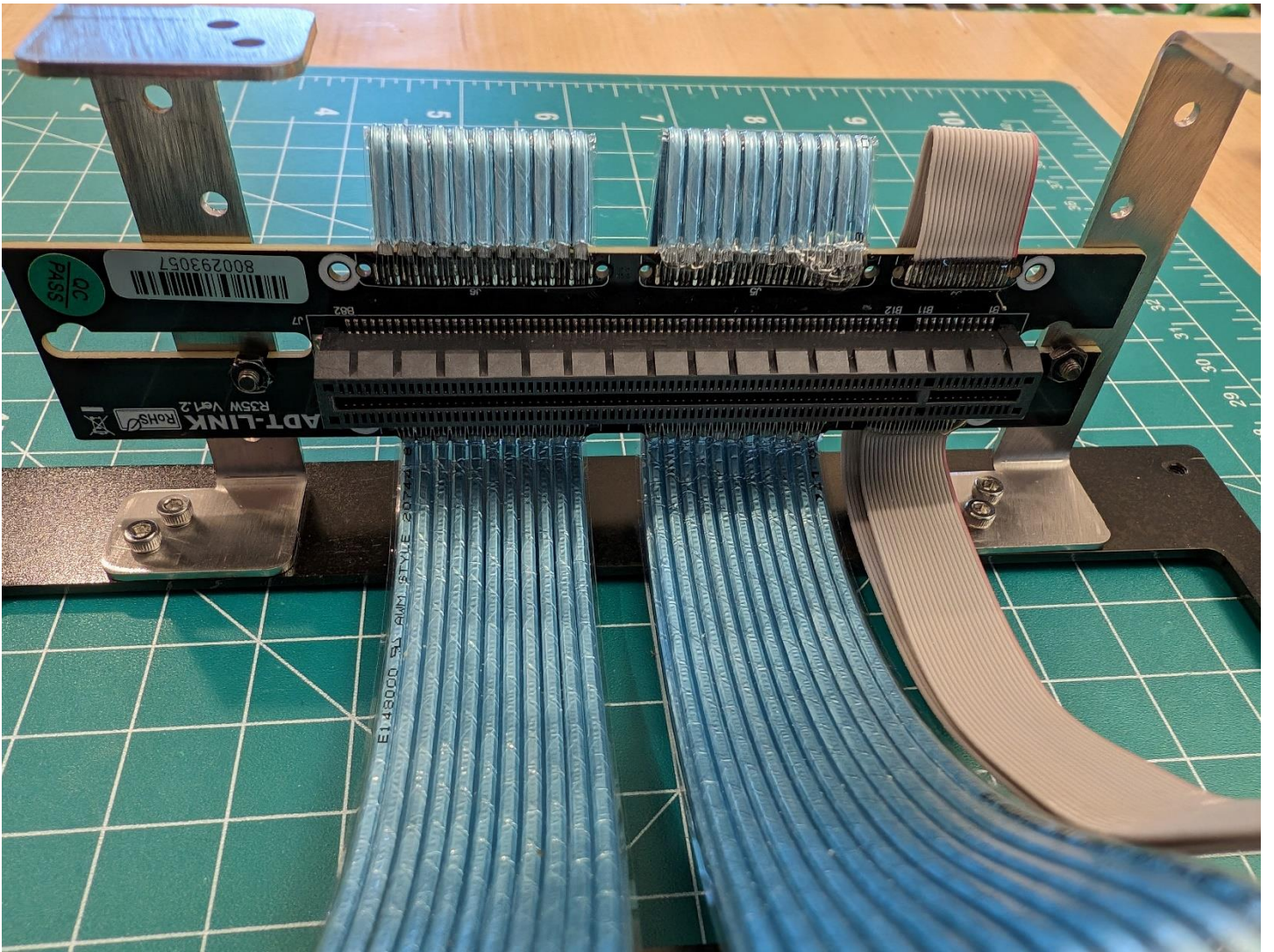


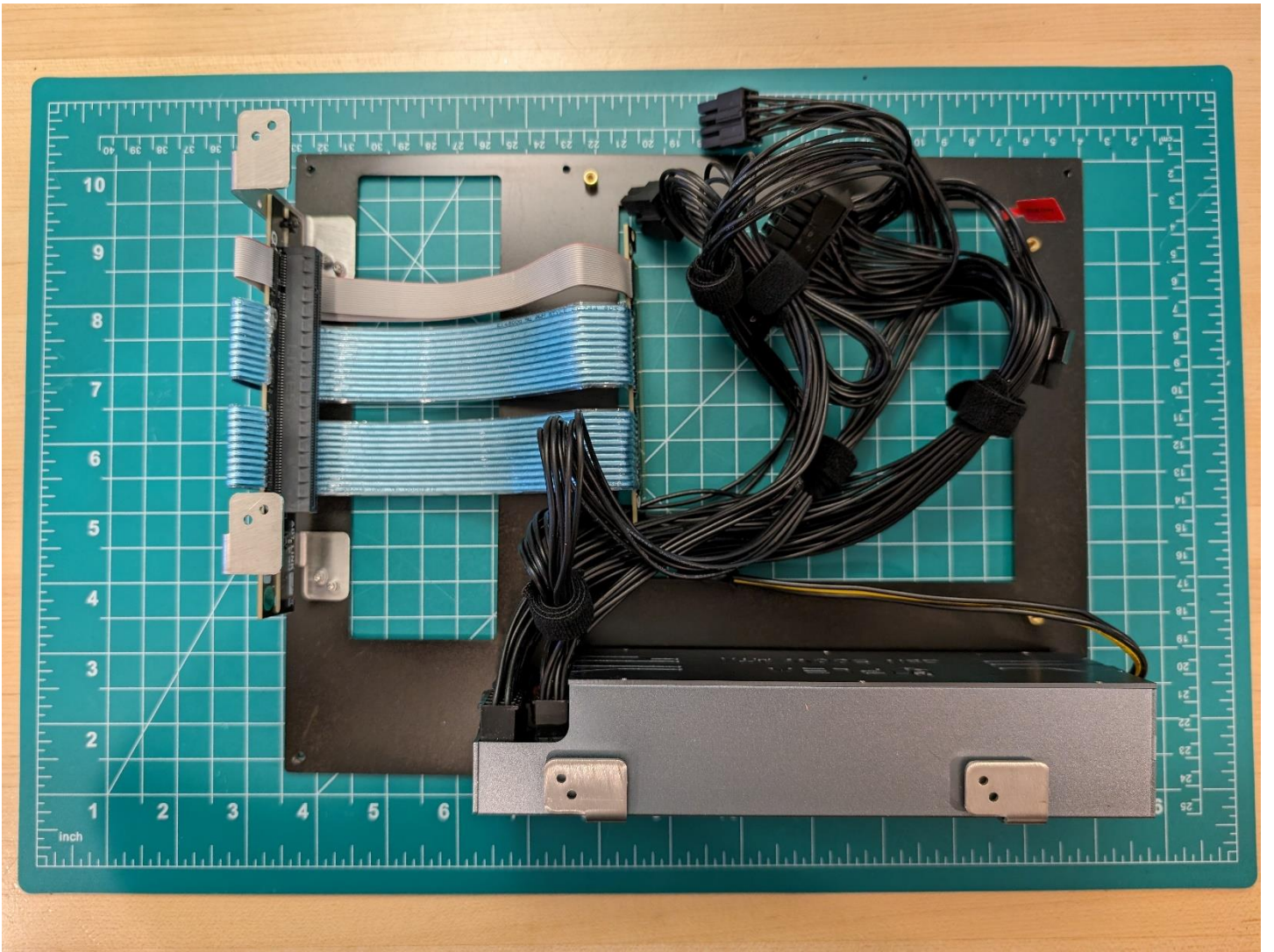


Attach PCI Riser to Rear Combo Mounts

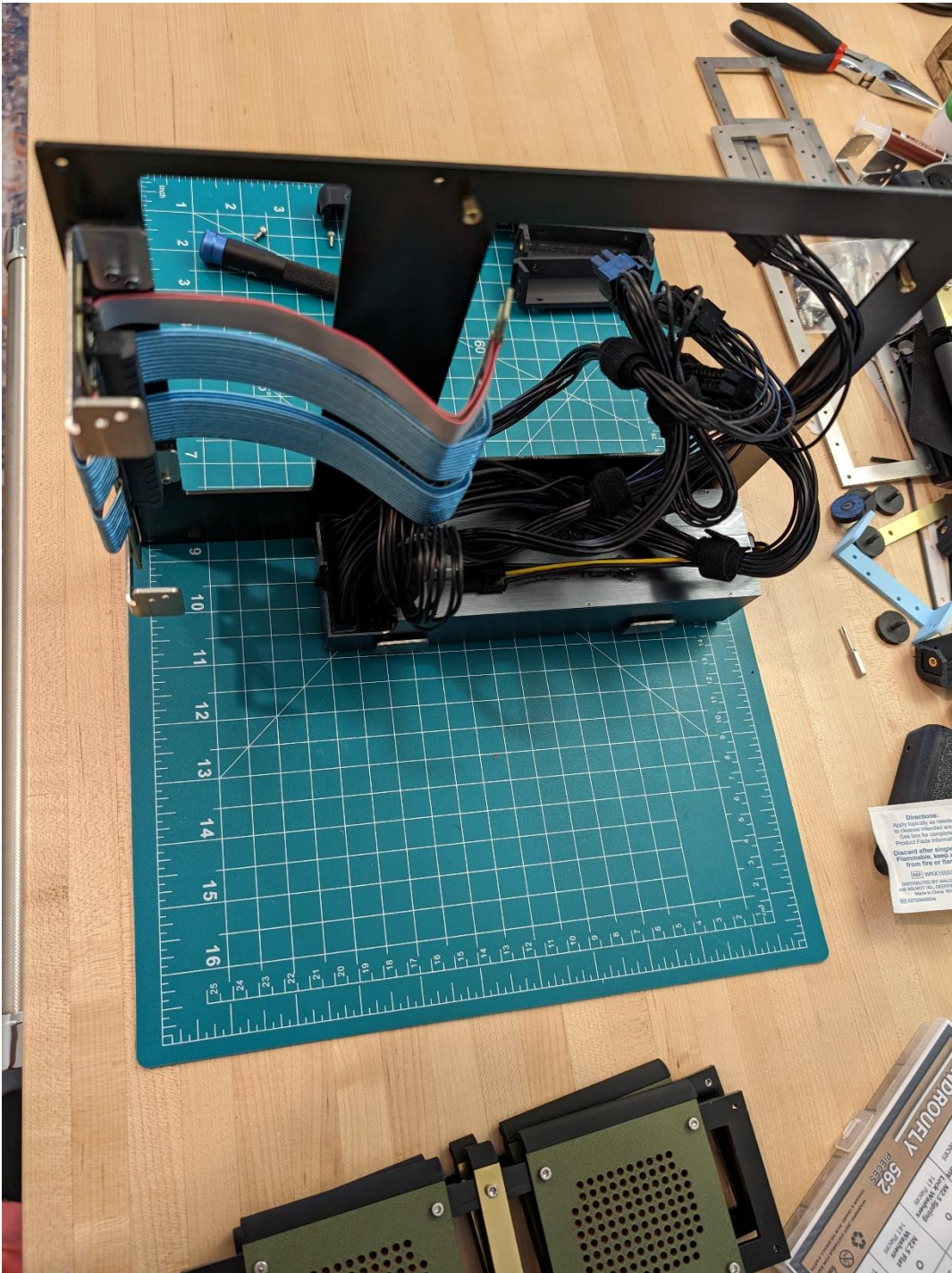




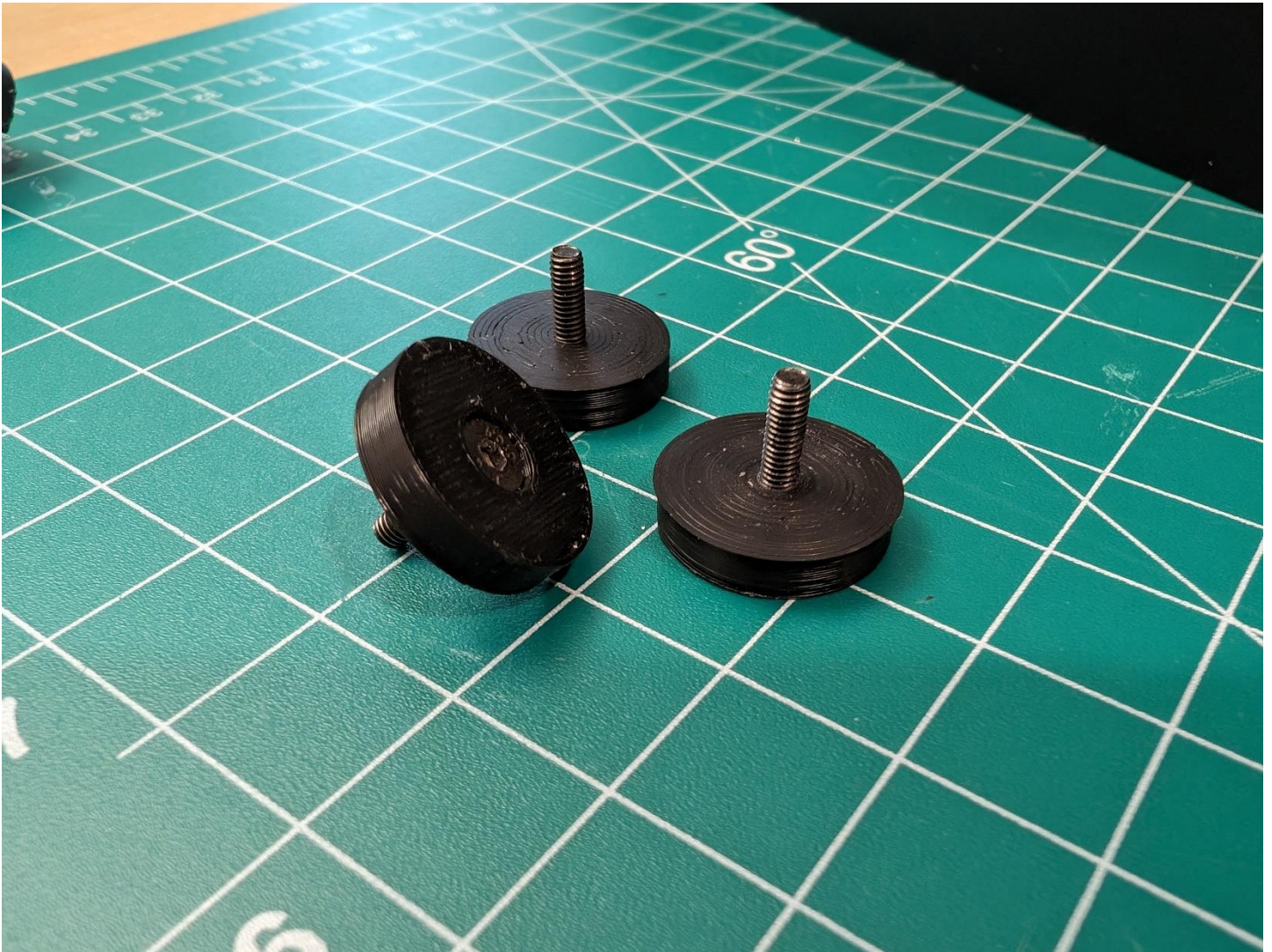




Flip case onto front face, using the weight of the PSU for support



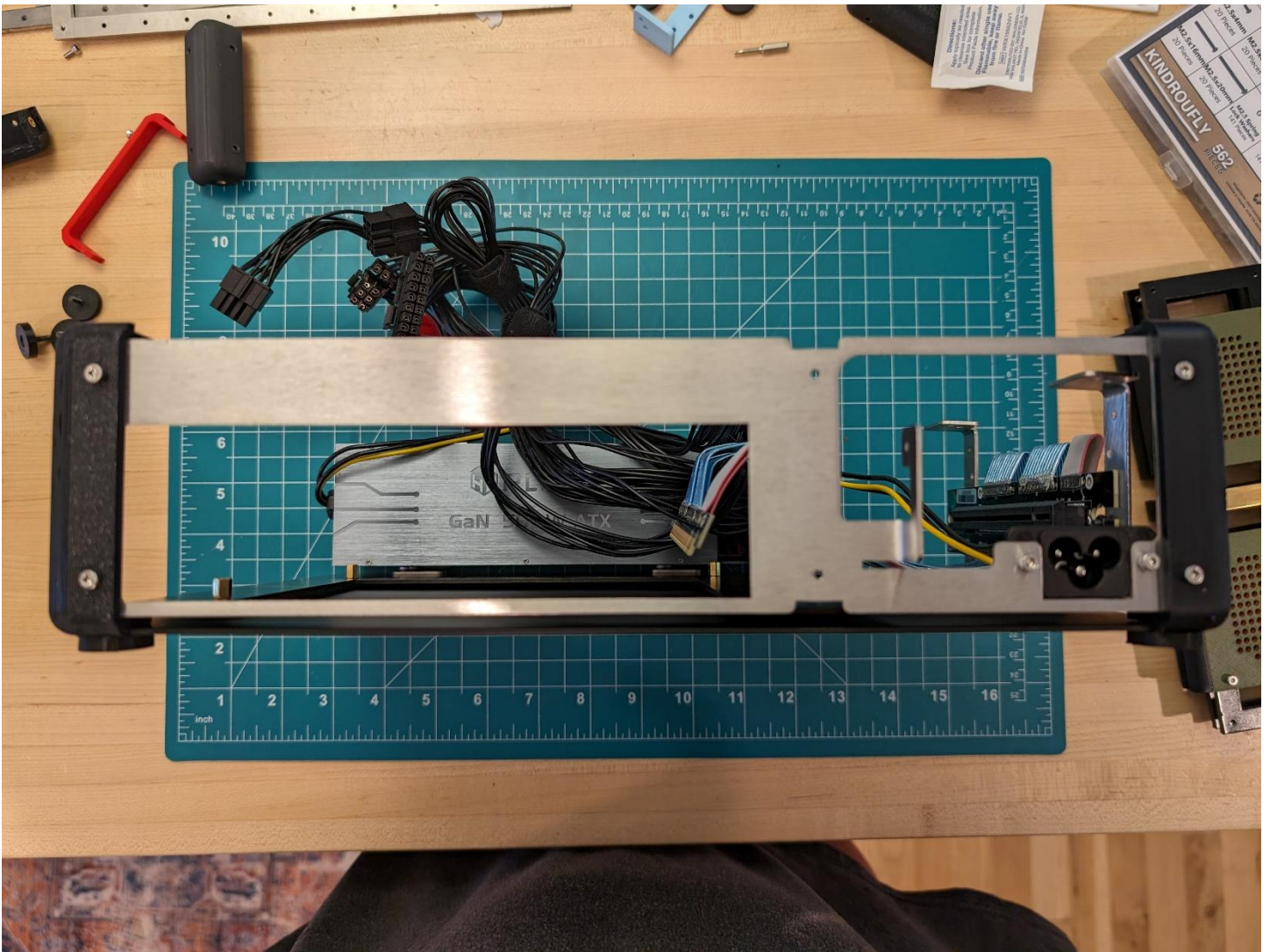
Install the Rear Corners and Feet (If using horizontal orientation)

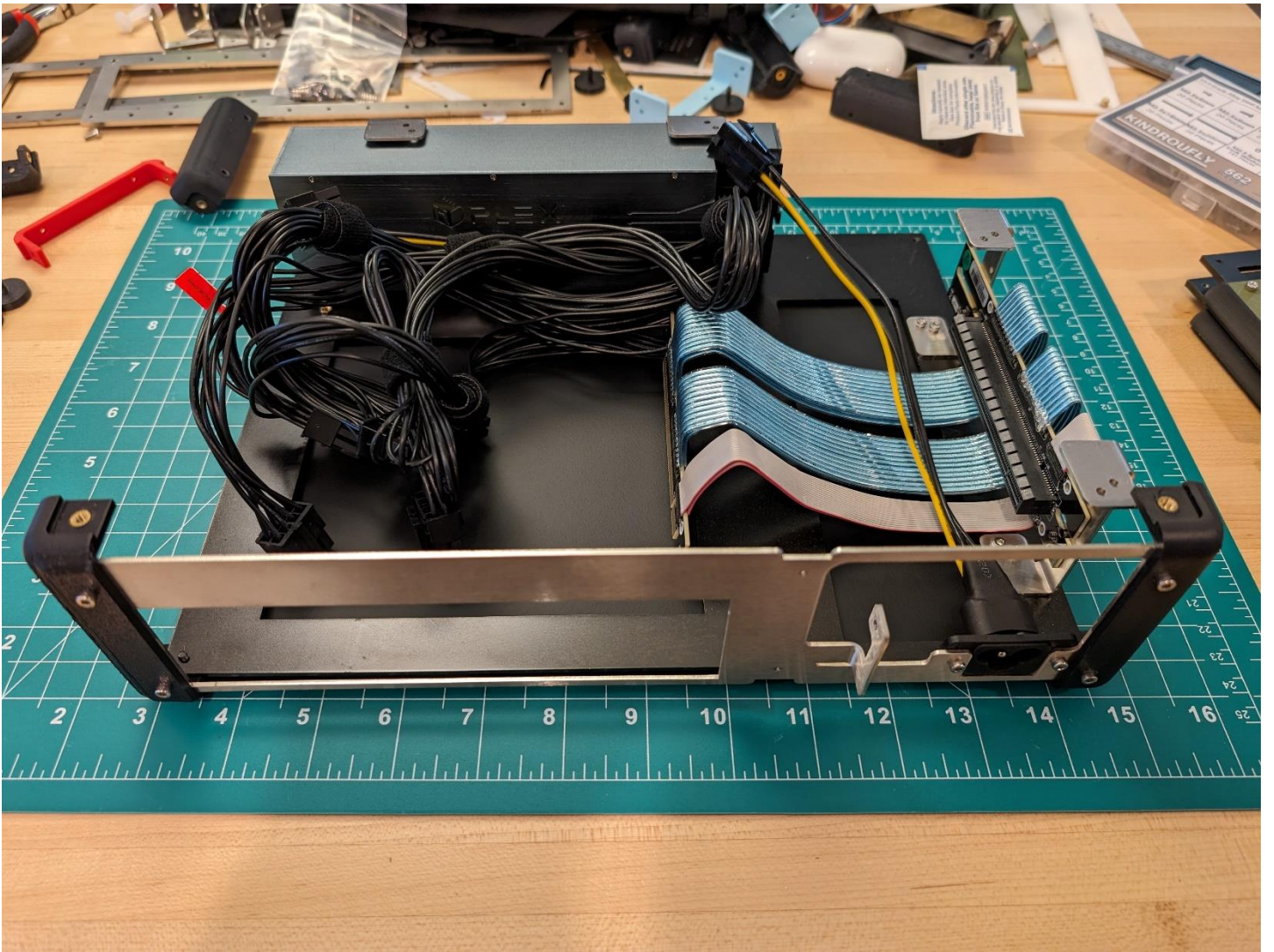






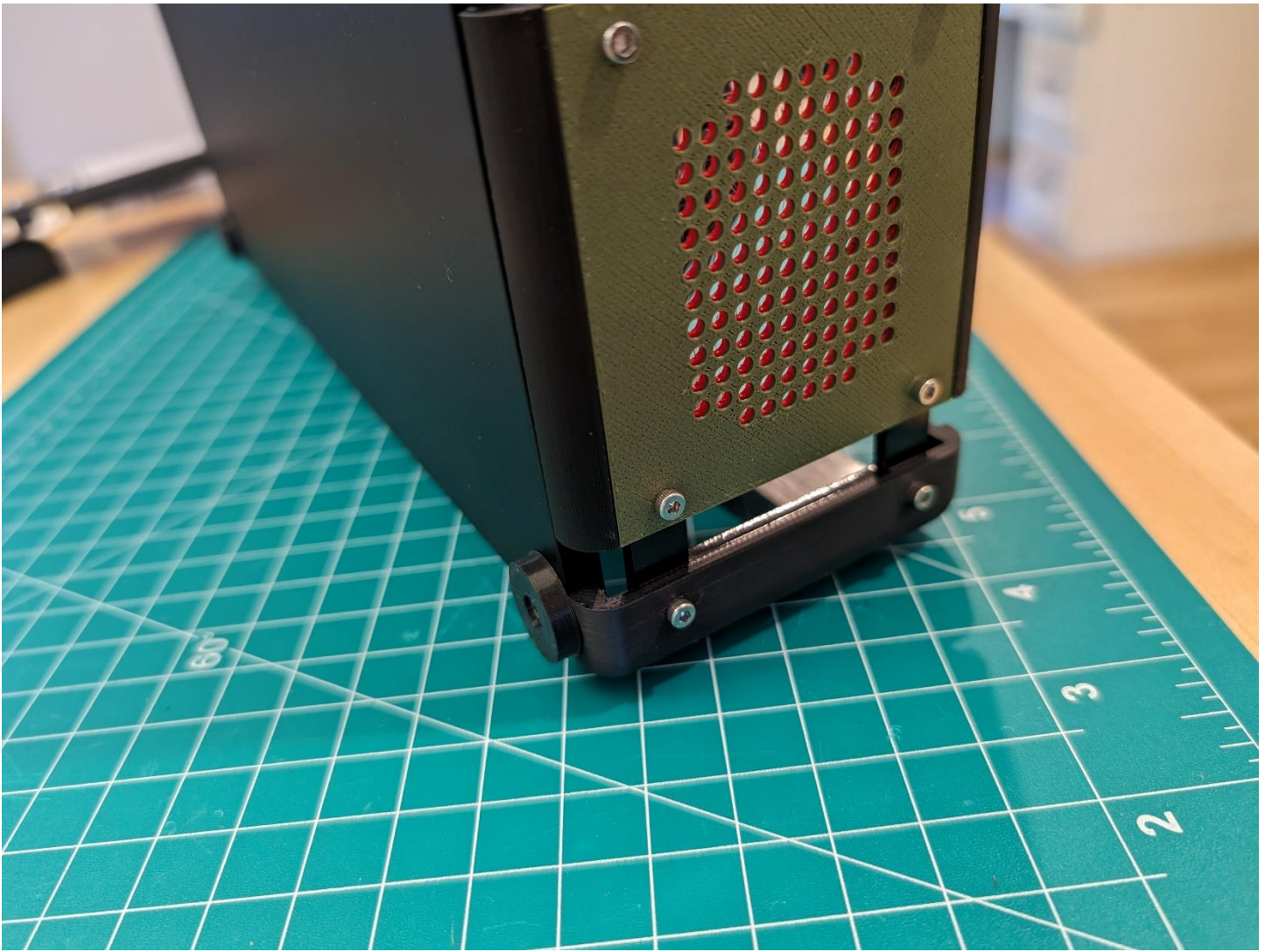
Install the Back Plate and attach the PSU power connector

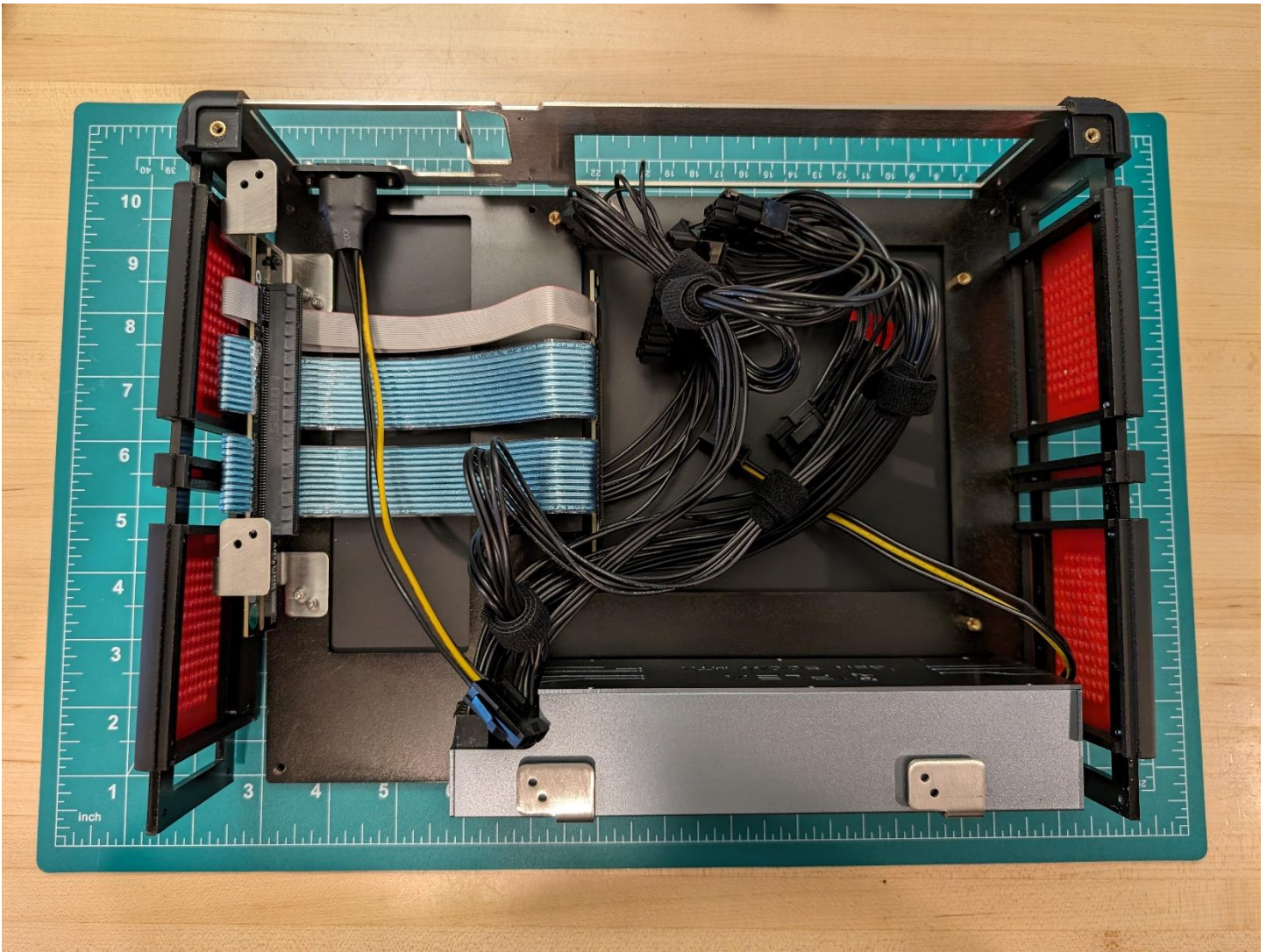




Attach the Side Panels to the rear Corners

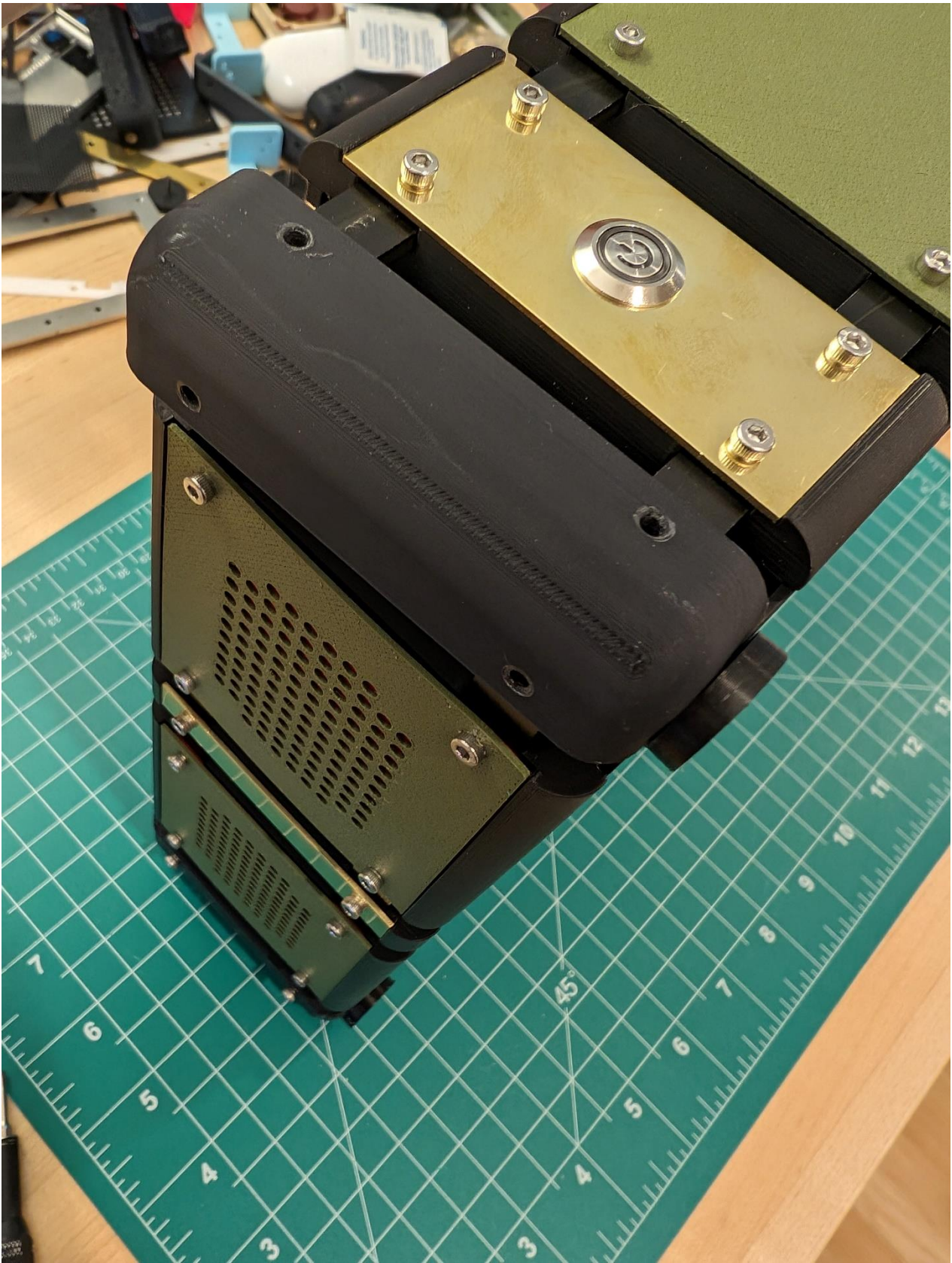




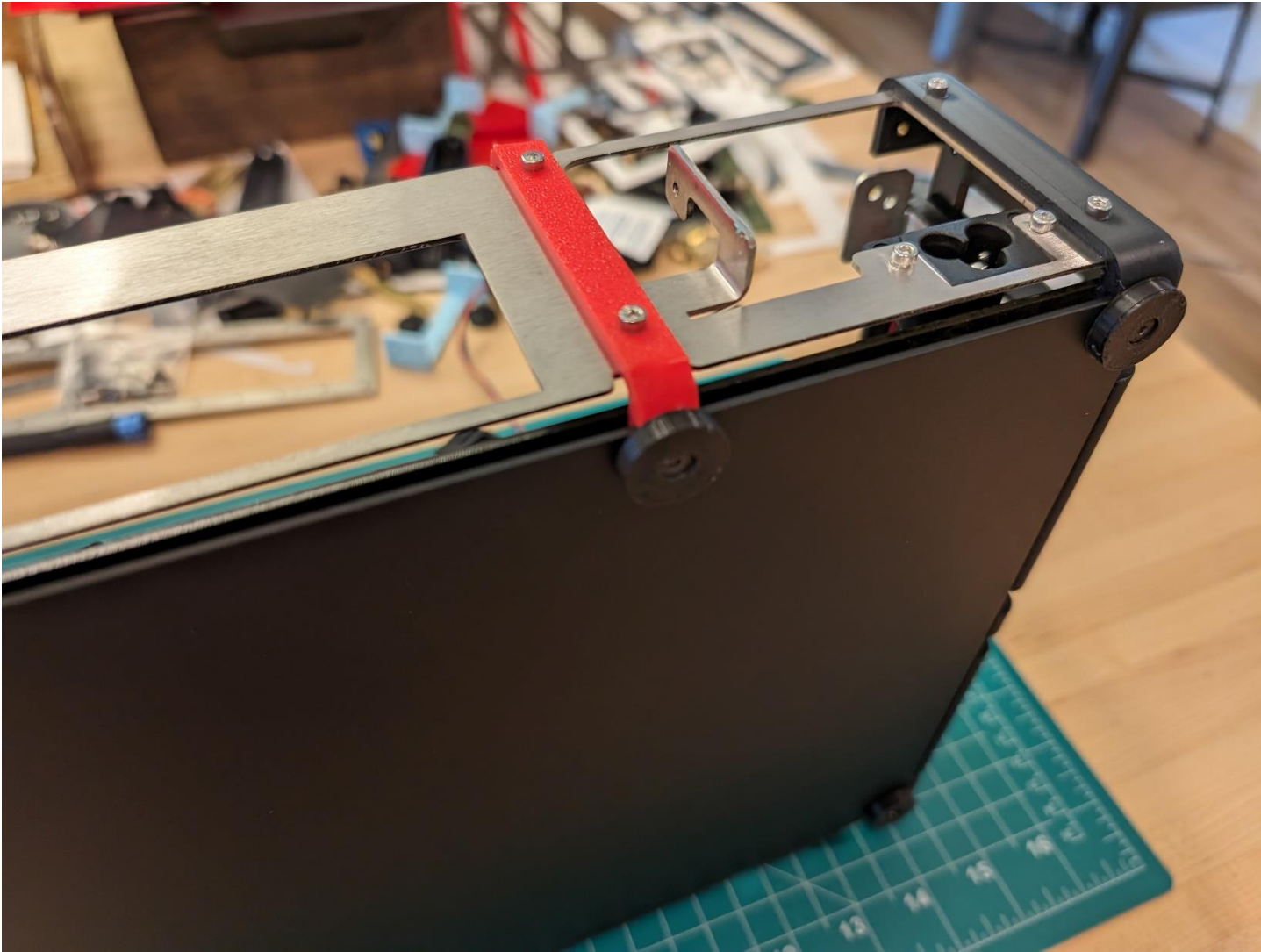


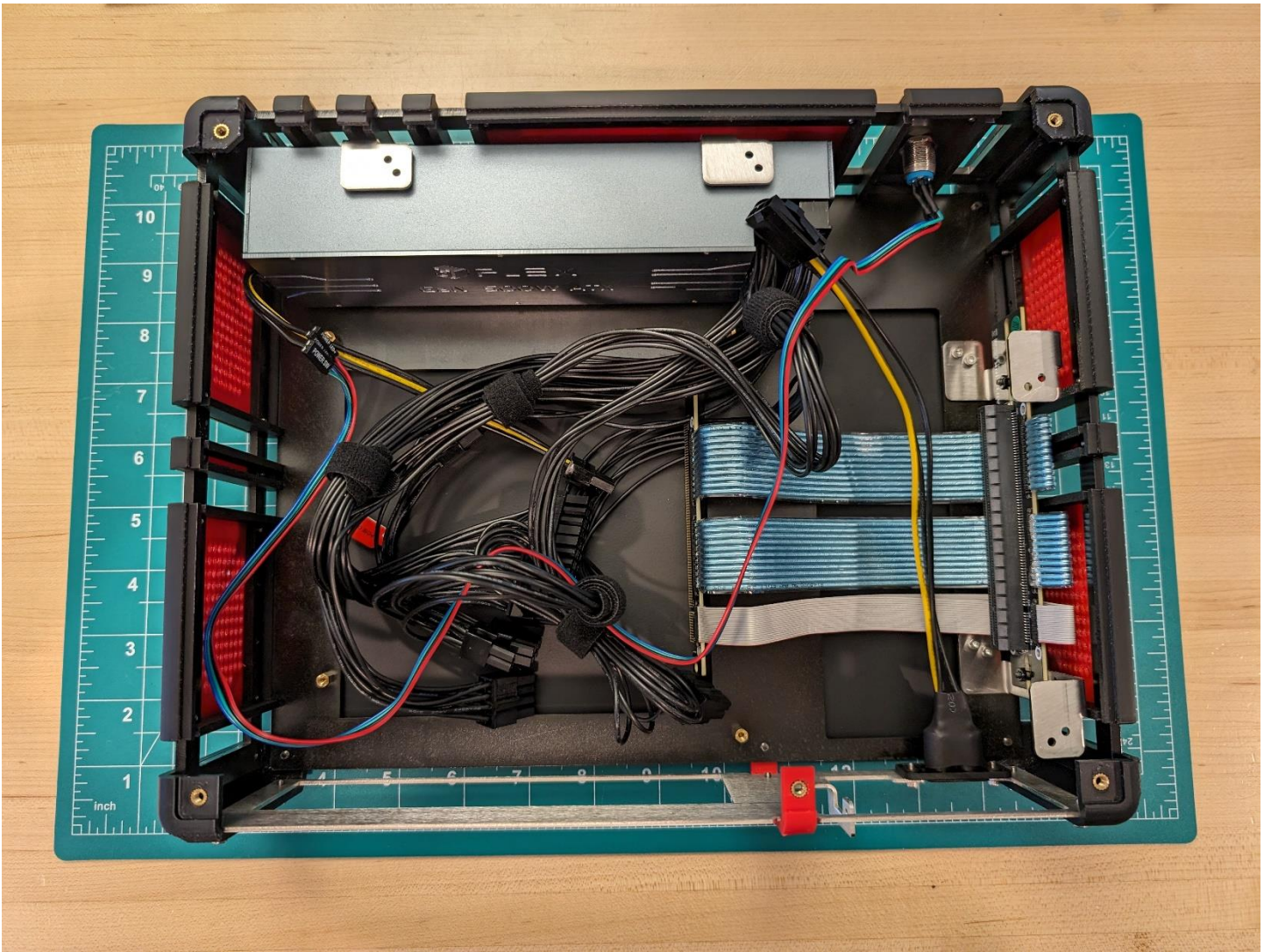
Attach the Front Plate , Corners and Feet to the Side Panels installed previously.



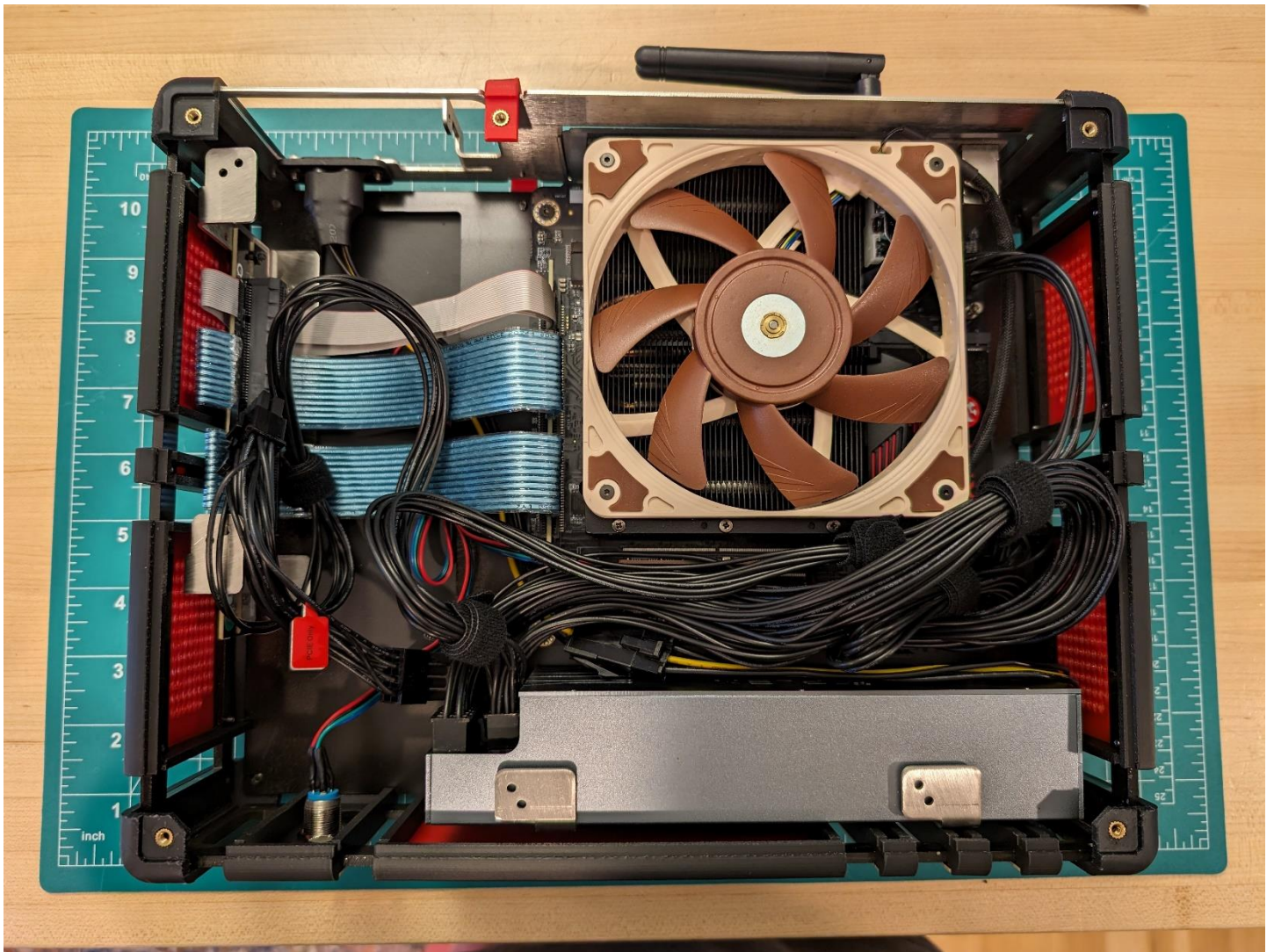


Attach the final foot (if using horizontal orientation) with the Segment Back Bracer to the Back Plate

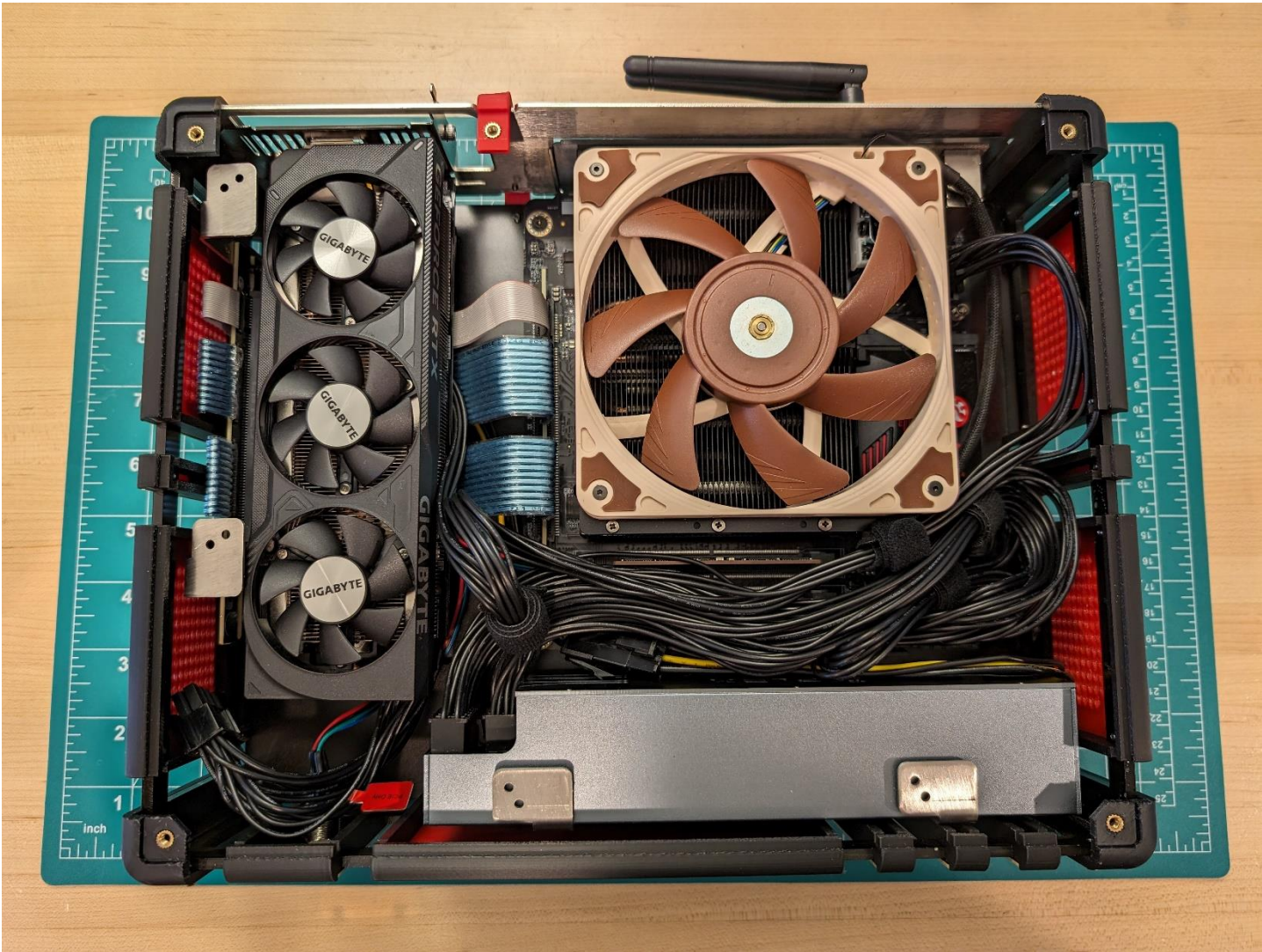




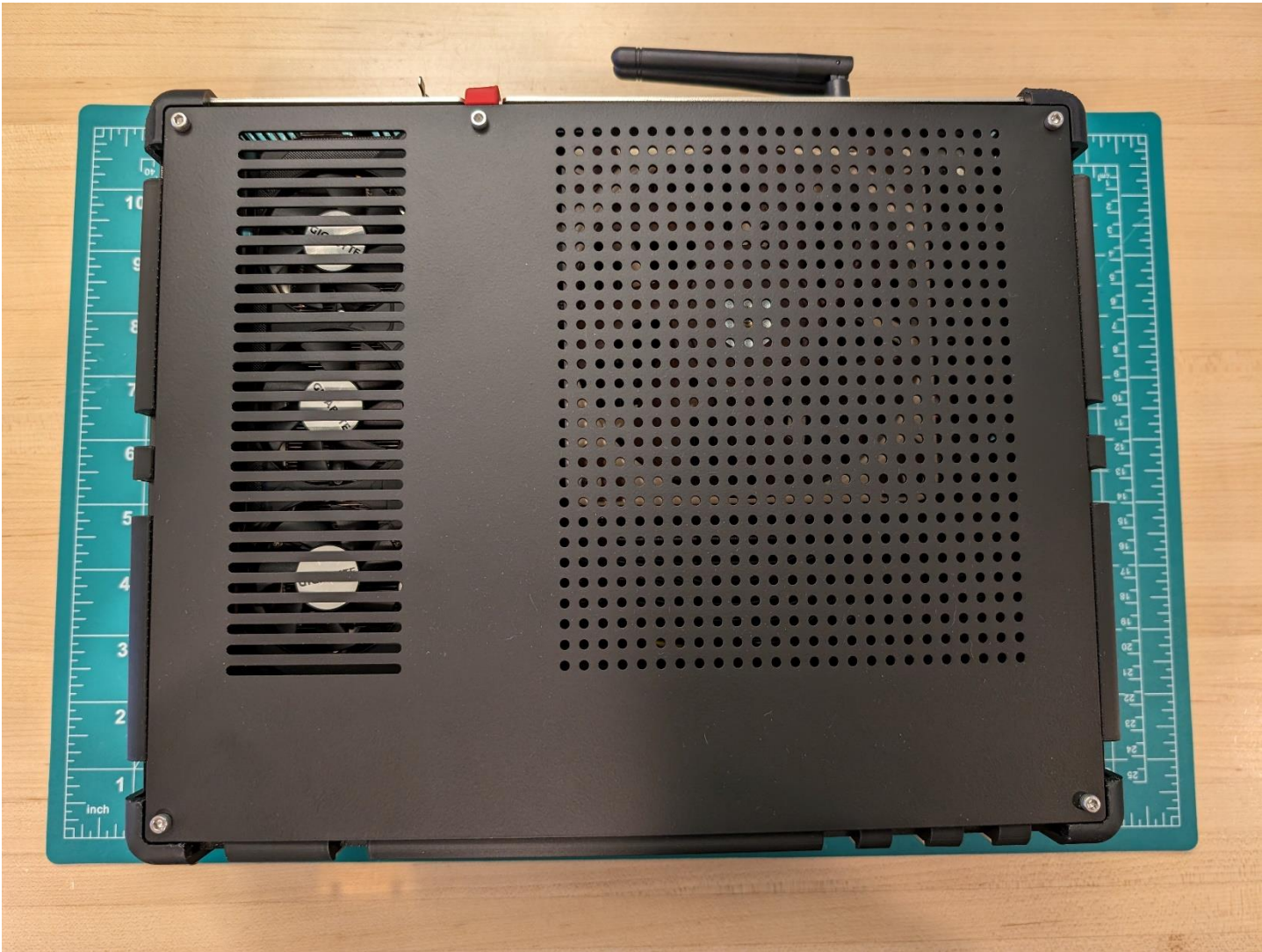
Install Motherboard



Install GPU



Install Top Plate



Build Complete





